



Gibbs Green, W14

£350,000

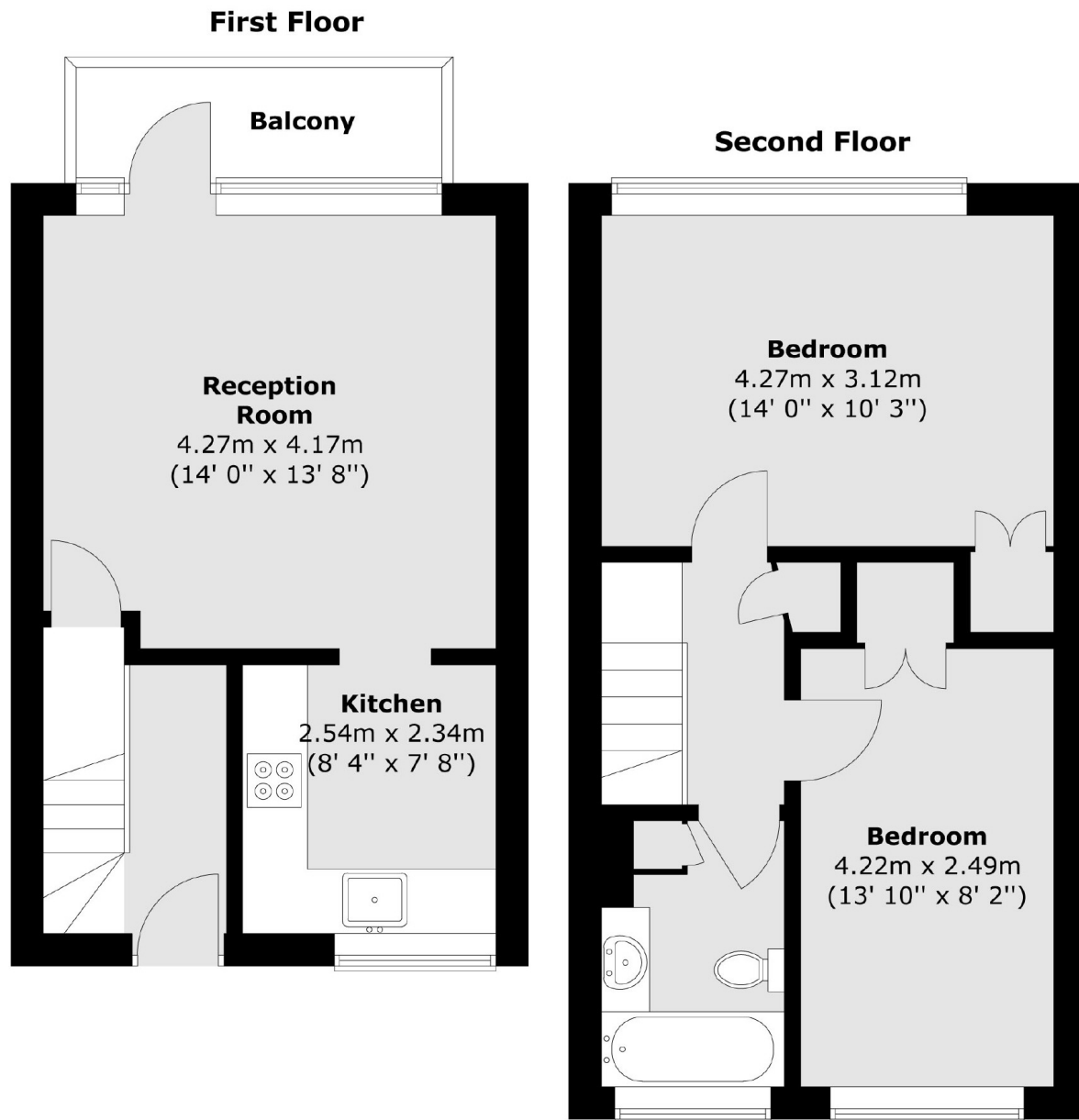
A spacious two bedroom apartment situated over two levels with a large private balcony. Offered with no onward chain and is an ideal investment or first home.

Gibbs Green is located in the West Kensington estate and is best accessed off Beaumont crescent. Well placed for West Kensington and Barons Court underground station and the A4 for easy access into and out of central London.

Features

Split Level
Two Bedrooms
Leasehold
Balcony
Great Location
No Chain

Gibbs Green, London, W14



Total area (approx.) : 64.4 sq. m (693 sq. ft)
Total balcony area (approx.) : 3.3 sq. m (35 sq. ft)