



## Castletown Road, W14

£4,700 Per calendar month

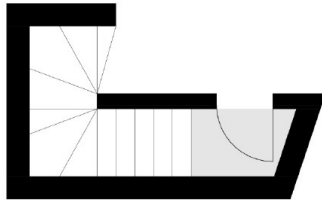
This four bedroom split level period conversion apartment is based on a quiet residential road in West Kensington. The property has two bathrooms, a private balcony off one of the bedrooms and a separate kitchen.

Castletown Road is a popular sought after residential street that is close to Barons Court and West Kensington stations, local shops and the A4 for easy access into and out of Central London.

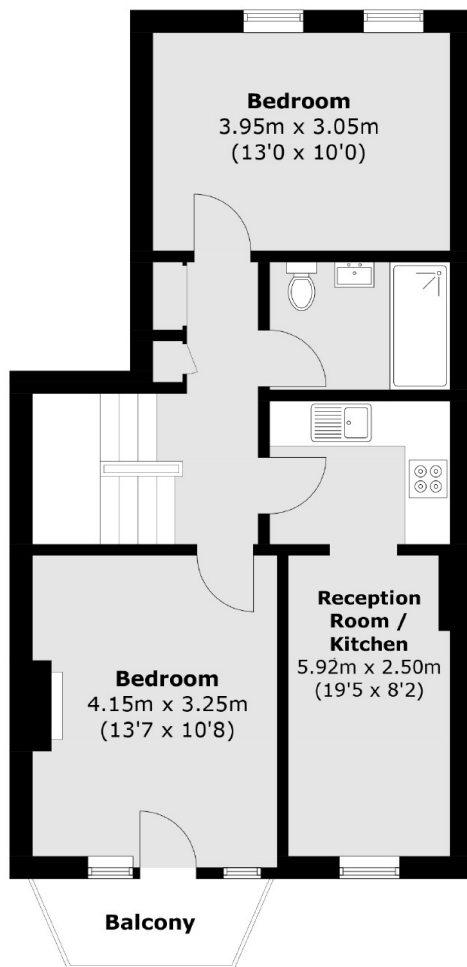
### Features

- Four Bedrooms
- Split Level
- Two Bathrooms
- Close To Stations
- Outside Space
- Top Floor

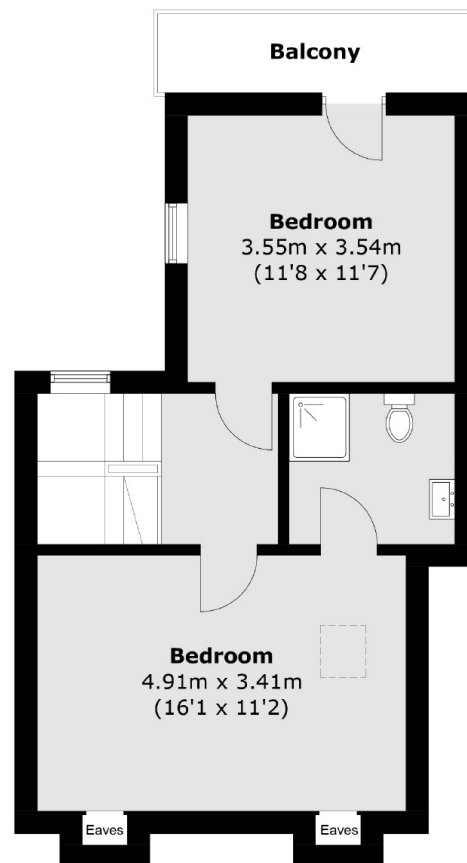
# Castletown Road, London, W14



**First Floor**



**Second Floor**



**Third Floor**

Total area (approx.): 99.3 sq. m (1,068.8 sq. ft)  
(Excluding Eaves)

Balconies area (approx.): 7.4 sq. m (79.6 sq. ft)