



Queen's Club Gardens, W14

£935,000

Situated in the ever popular Queen's Club Gardens, this three bedroom apartment has fantastic views of the communal gardens and tennis courts.

Queen's Club Gardens is located adjacent to the Queen's Club tennis, close to shops, cafes, bars and restaurants and is only a short walk to Barons Court and West Kensington underground stations.

Features

- 999 Year Lease
- Two Bathrooms
- Communal Gardens
- Three Bedrooms
- Communal Tennis Courts
- No Onward Chain

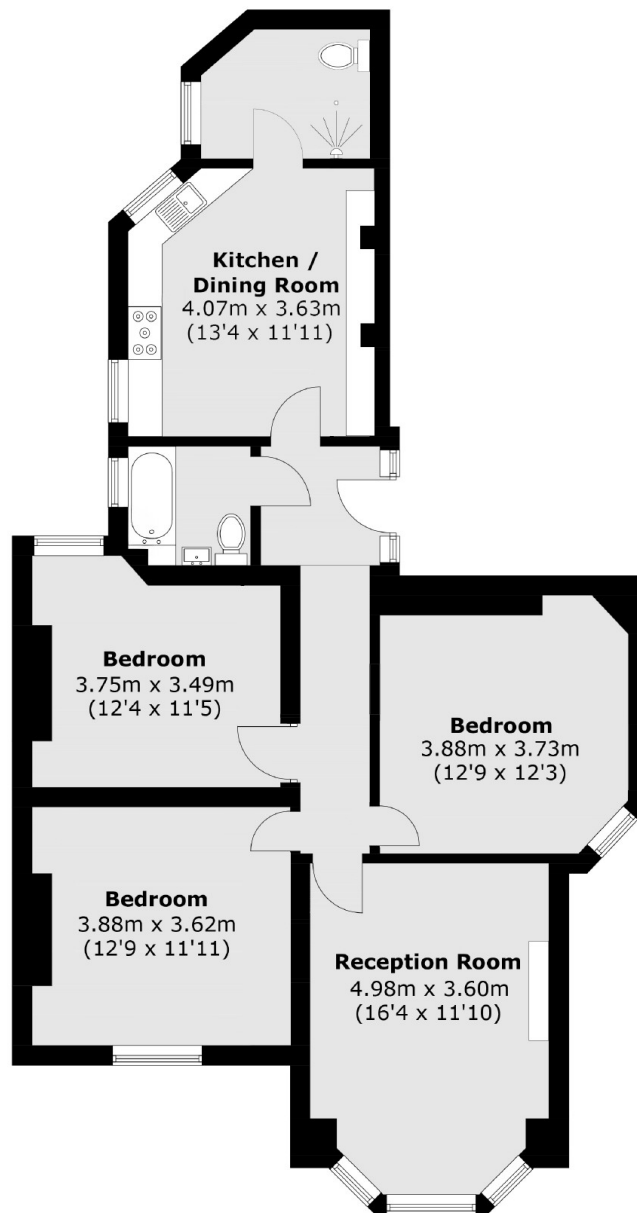


Queen's Club Gardens, W14

Located on the raised ground floor and offering superb natural light throughout with three double bedrooms and two bathrooms. The property also has the benefit of a modern and large kitchen/diner and excellent storage space.



Queen's Club Gardens, London, W14



Total area (approx.): 93.4 sq. m (1005.3 sq. ft)