



## Queen's Club Gardens, W14

£695,000

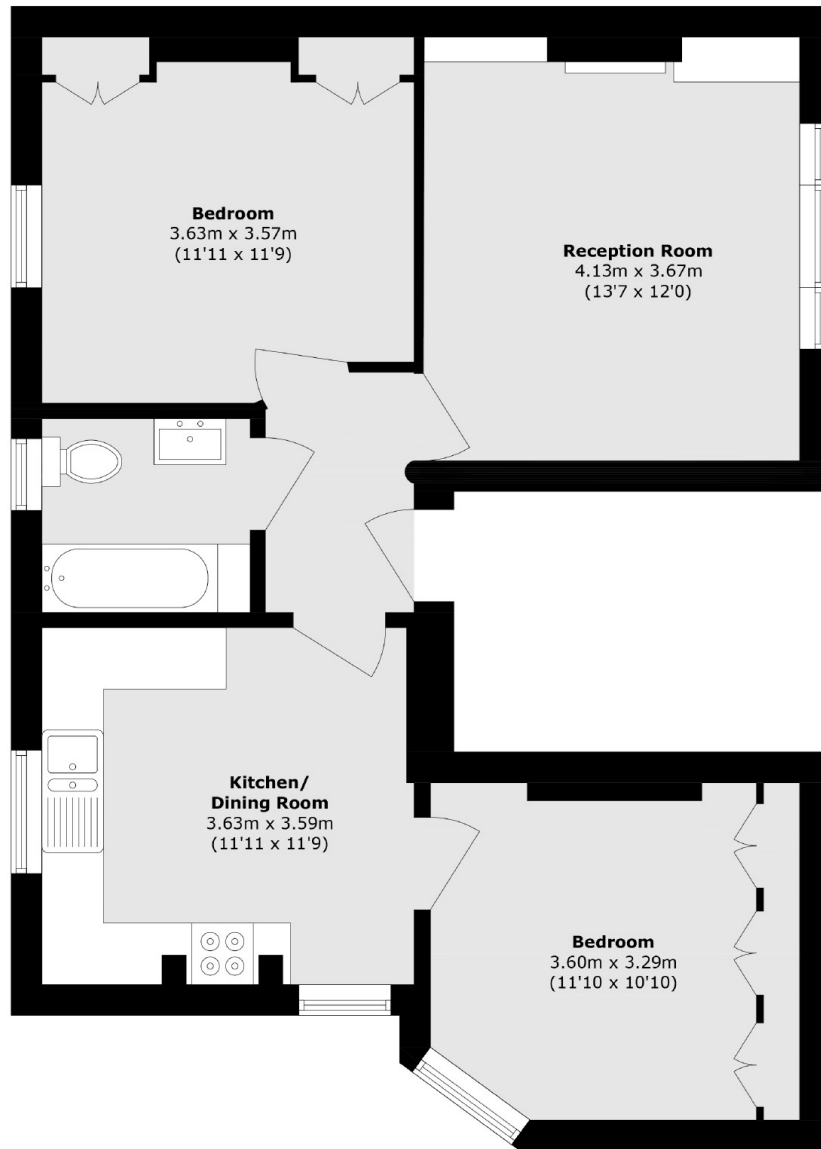
A two bedroom apartment situated on the first floor of the ever popular Queen's Club Gardens. The property offers excellent space with a large eat-in kitchen/diner, living room and two large bedrooms.

Queens Club Gardens is located adjacent to the Queens Club tennis club, close to shops, cafes, bars and restaurants and is only a short walk to Barons Court and West Kensington underground stations.

### Features

- 999 Year Lease
- Two Bedrooms
- First Floor
- No Chain
- Access To Communal Gardens
- Close To Tubes

# Queen's Club Gardens, London, W14



Total area (approx.): 61.1 sq. m (657.6 sq. ft)