

## Spencer Mews, W6

£1,600 Per calendar month

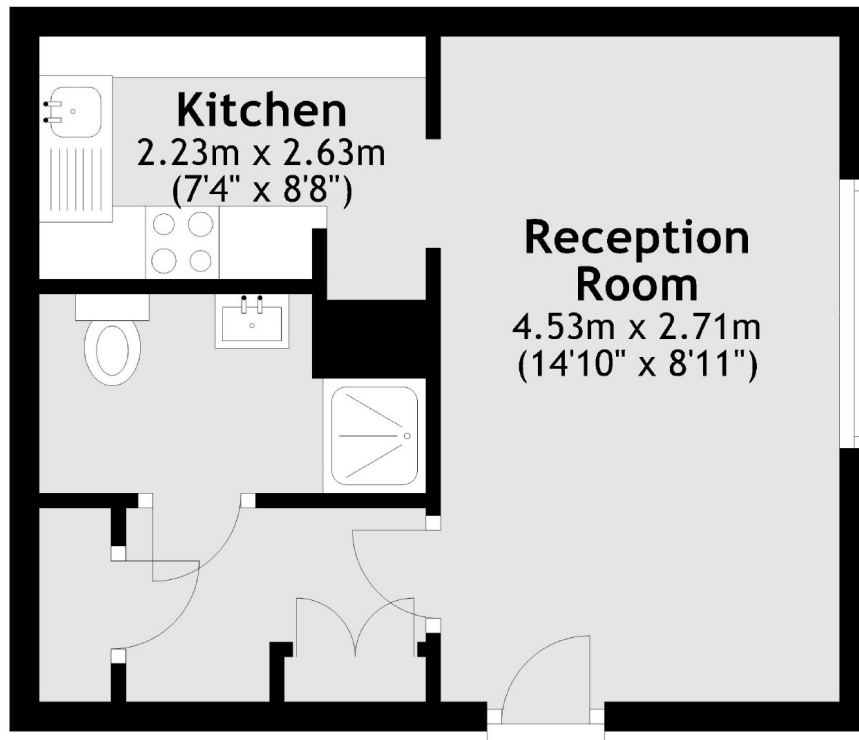
This newly refurbished large studio apartment is based in a quiet residential mews close to Fulham Palace Road. The property has wood floor throughout, a separate full size kitchen, built in wardrobes and modern shower room. Also you have access to a private garden.

Spencer Mews is based in a quiet cul-de-sac in Hammersmith and is close to all the shops, cafés, restaurants and transport links that Fulham Palace Road, Hammersmith and Barons Court have to offer.

### Features

- Large Studio
- Newly Refurbished
- Separate Kitchen
- Wood Floor Throughout
- Ground Floor
- Garden

Spencer Mews,  
London, W6



Total area: approx. 24.7 sq. metres (265.8 sq. feet)