

Beaumont Crescent, W14

£585,000

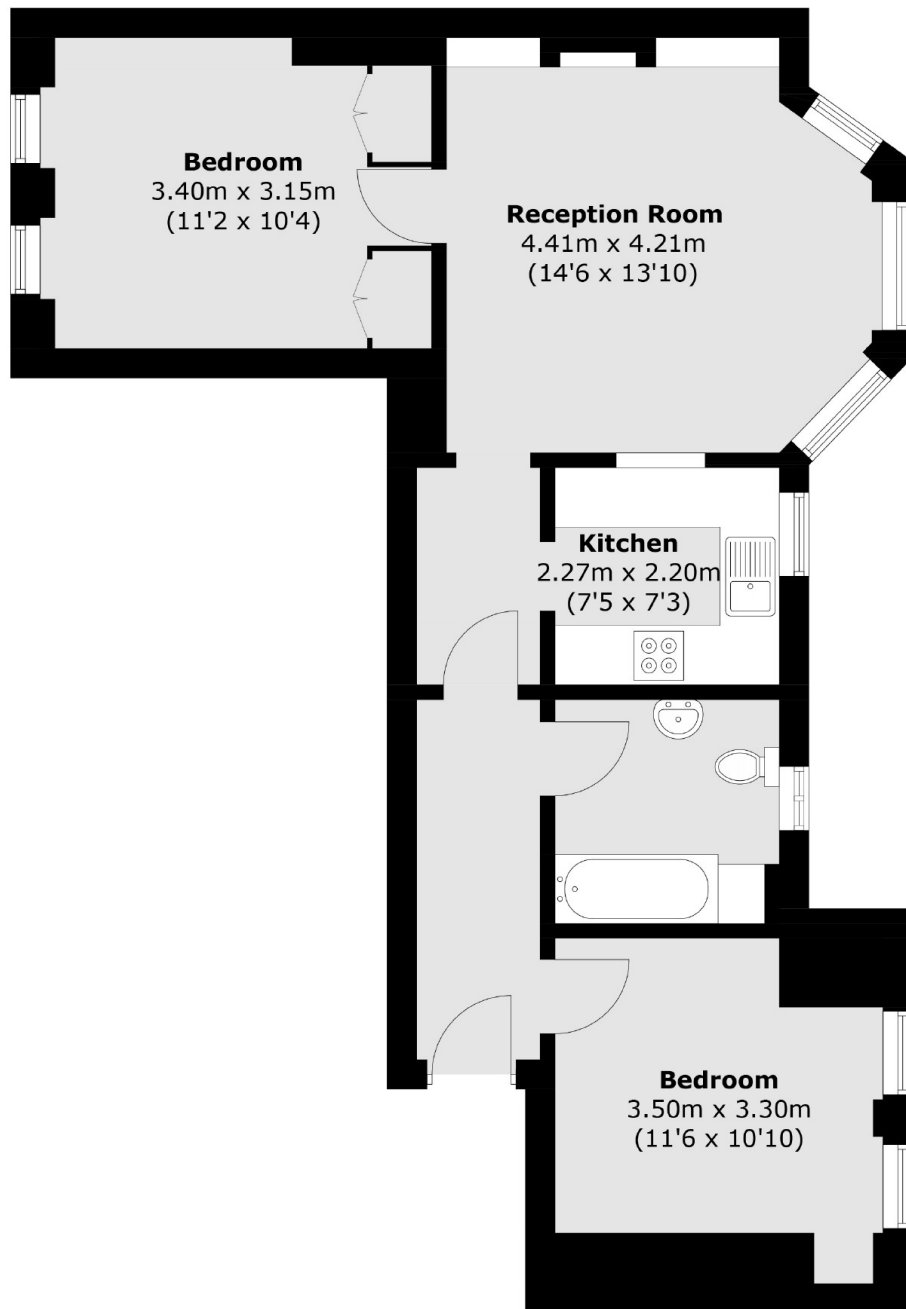
This charming two double bedroomed, first floor Victorian mansion flat is well laid out and flooded with natural light. The property is well laid out with a semi-open kitchen offering a practical yet social feel.

Beaumont Crescent is a pretty, quiet tree-lined residential street less than 200 yards from West Kensington tube station and all of the shops, cafes and other amenities on the North End Road.

Features

- No Onward Chain
- Long Leasehold
- Excellent Size
- Two Bedrooms
- Fantastic Natural Light
- First Floor

Beaumont Crescent, London, W14



Total area (approx.): 61.7 sq. m (664.1 sq. ft)

Dexters

West Kensington
179-181 North End Road
London
W14 9NL
Sales
020 7381 6381

Energy Rating: C. We aim to make our particulars both accurate and reliable. However they are not guaranteed; nor do they form part of an offer or contract. If you require clarification on any points then please contact us, especially if you're traveling some distance to view. Please note that appliances and heating systems have not been tested and therefore no warranties can be given as to their good working order.

 **RICS** | Regulated
Estate Agent
and Letting Agent

[dexters.co.uk](https://www.dexters.co.uk)