



Castletown Road, W14

£625,000

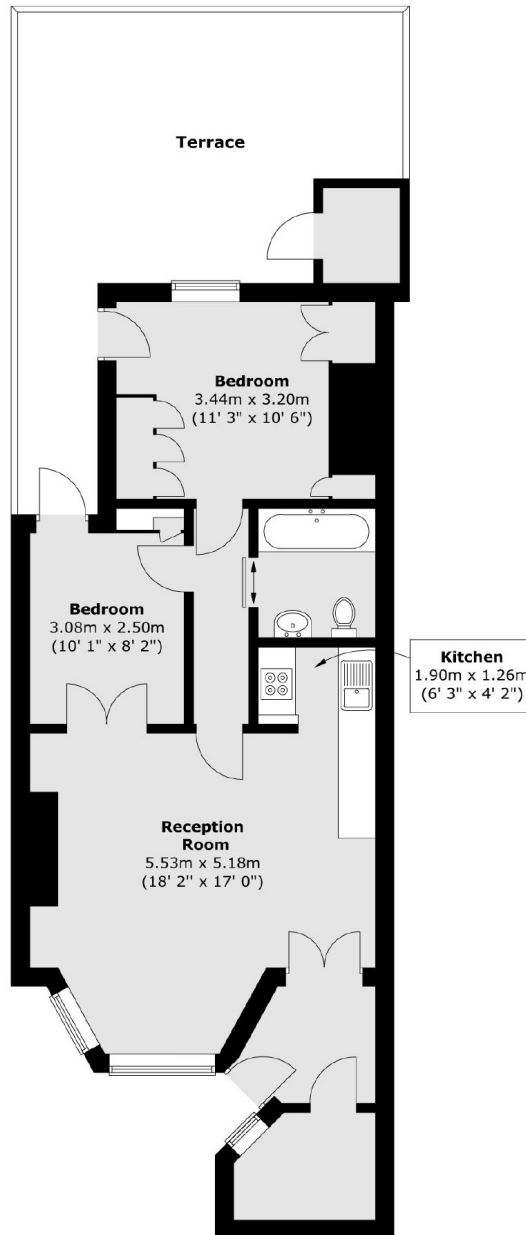
A spacious and well presented two bedroom garden flat situated on a superb road close to Queen's Tennis Club. The property has a large open plan living space with kitchen and breakfast table, two double bedrooms and is offered with no onward chain.

Castletown Road is a popular, sought after residential road within 200 yards to West Kensington Underground station and the A4 for easy access into and out of central London. The numerous shops, bars and restaurants on Kensington High Street are within a mile.

Features

- Share Of Freehold
- Patio Garden
- Two Bedrooms
- Great Size
- High Ceilings
- Private Entrance

Castletown Road, London, W14



Total area (approx.) : 67.8 sq. m (730 sq. ft)
Total terrace area (approx.) : 29.1 sq. m (313 sq. ft)

Dexters

West Kensington
179-181 North End Road
London
W14 9NL
Sales
020 7381 6381

Energy Rating: D. We aim to make our particulars both accurate and reliable. However they are not guaranteed; nor do they form part of an offer or contract. If you require clarification on any points then please contact us, especially if you're traveling some distance to view. Please note that appliances and heating systems have not been tested and therefore no warranties can be given as to their good working order.

 **RICS** | Regulated
Estate Agent
and Letting Agent

[dexters.co.uk](https://www.dexters.co.uk)