



Comeragh Road, W14

£2,500 Per calendar month

A fantastic two double bedroom, two bathrooms apartment located in this Victorian building in central West Kensington. The property is 92 Sqm, split level and has part wooden floor, part carpet.

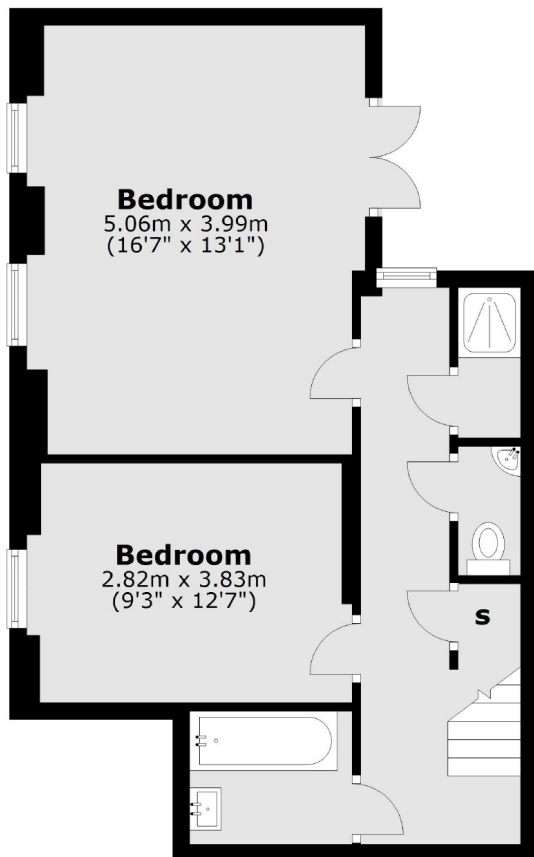
Comeragh Road is located within the 'grid' area of West Kensington, with excellent access to both the Piccadilly line at Barons Court and the District line at West Kensington.

Features

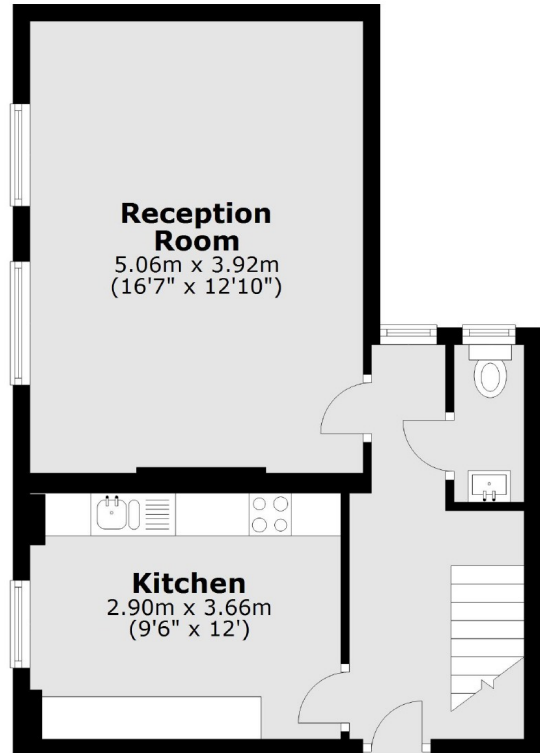
Two Bedrooms
Two Bathrooms
Split Level
Close To Tube
Freshly Painted
Patio

Comeragh Road, London, W14

Lower Ground Floor



Ground Floor



Total area: approx. 89.3 sq. metres (961.5 sq. feet)