



Queen's Club Gardens, W14

£2,500 Per calendar month

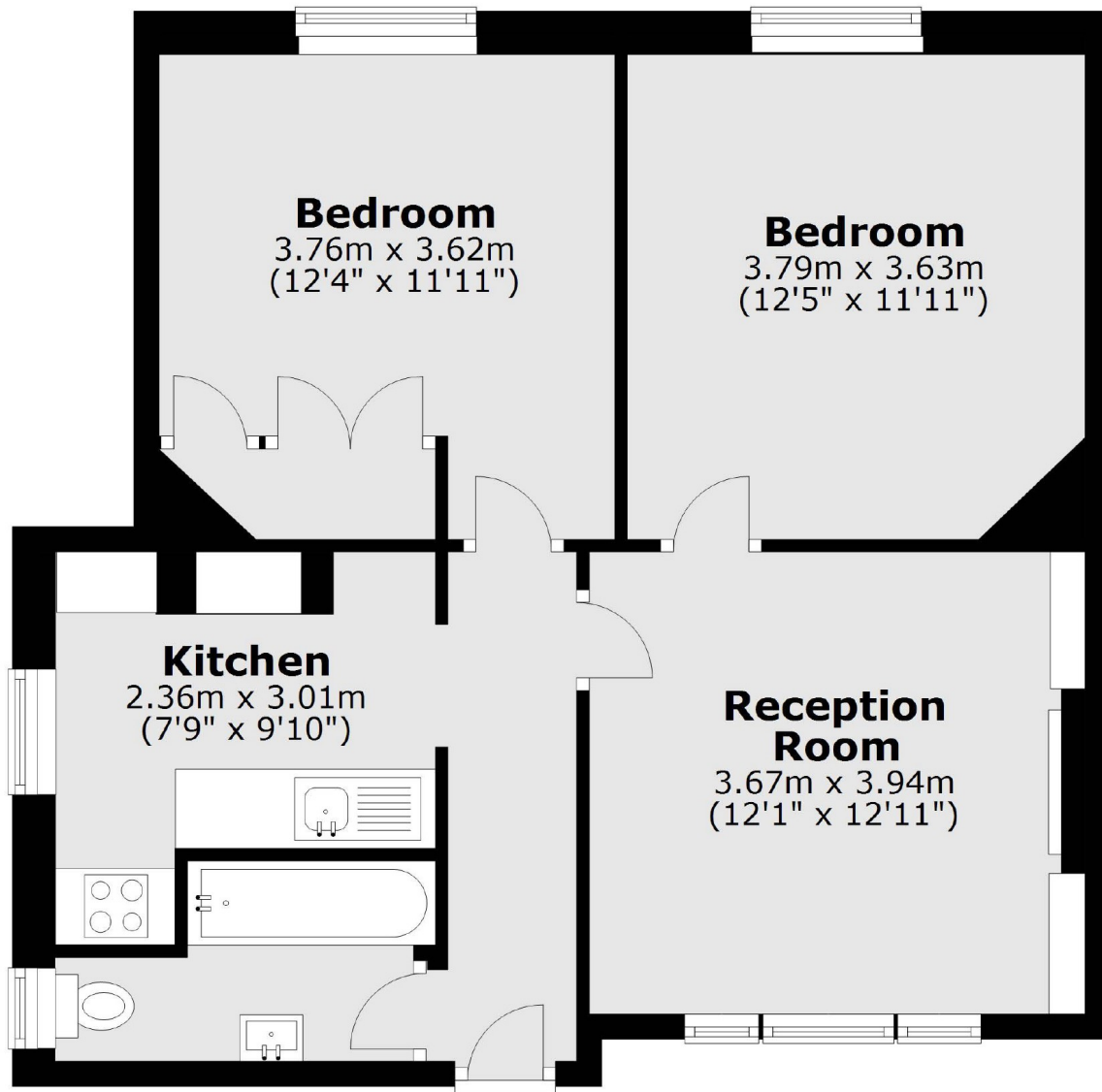
Queen's Club Gardens property features two generous sized double bedrooms with ample storage, separate lounge, modern bathroom and fully fitted new kitchen. Residents can also enjoy use of communal tennis courts and gardens.

Queen's Club Gardens is located just South off Queens Club within five hundred yards to either Barons Court or West Kensington underground stations and within a mile to the facilities in Fulham, Earls Court and Kensington.

Features

- Two Double Bedrooms
- Communal Gardens
- Ground Floor
- Tennis Courts
- Queen's Club Gardens
- Wooden Flooring

Queen's Club Gardens,
London, W14



Total area: approx. 62.3 sq. metres (670.7 sq. feet)