



Edith Villas, W14

£4,150 Per calendar month

HEATING AND HOT WATER INCLUDED - A very good size four double bedroom split level maisonette located in this mansion building in central West Kensington, with a separate fitted kitchen and modern bathroom.

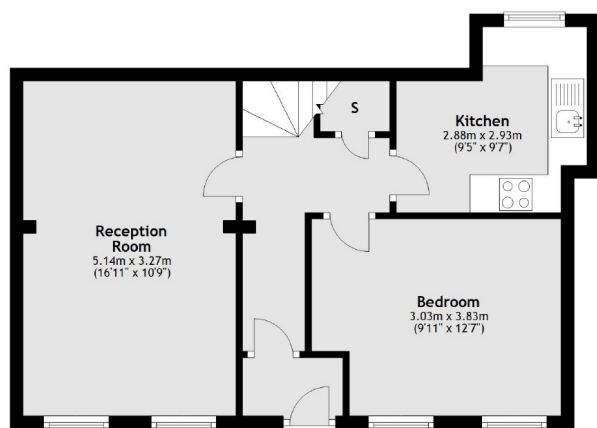
Edith Villas is close to a selection of shops and cafes, including Sainsburys Express. West Kensington and Barons Court underground stations are moments away providing links to the city via the Piccadilly or District lines.

Features

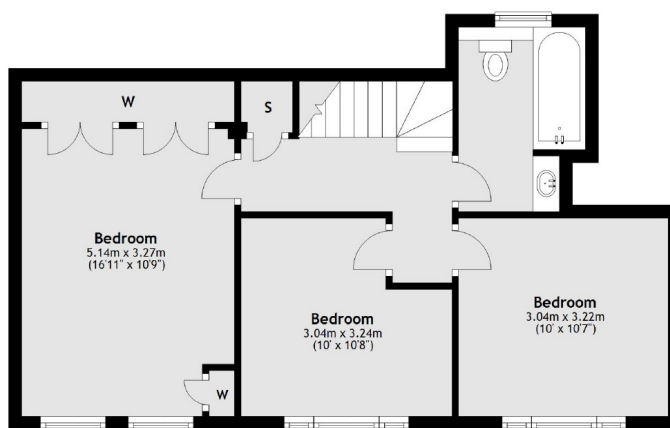
- Four Bedroom
- Split Level
- Separate Kitchen
- Heating Included
- Hot Water Included
- Communal Gardens

Edith Villas, London, W14

Ground Floor



First Floor



Total area: approx. 93.9 sq. metres (1010.9 sq. feet)