



## Lisgar Terrace, W14

£2,750 Per calendar month

This two bedroom, two bathroom property is based in the lovely Samuel Square development. The property has a large open plan reception room with modern kitchen and would be perfect for a family or two professional sharers.

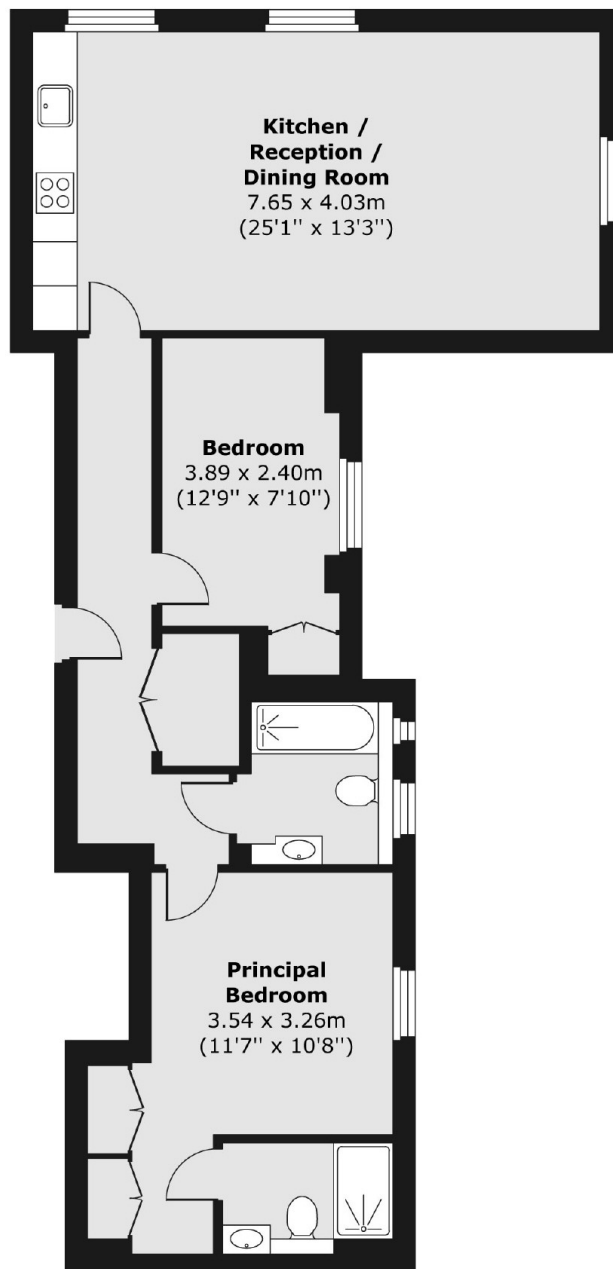
Lisgar Terrace is close to all the shops, bars, restaurants and cafés of Kensington Olympia, Hammersmith, West Kensington and Kensington High Street.

### Features

- Two Bedroom
- Two Bathroom
- One En-Suite
- Open Plan
- New Build Development
- Close To Shops

# Lisgar Terrace, London, W14

## Second Floor



Total area (approx.) 76.75 sq. m (826 sq. ft)