



Kinnoul Road, W6

£795,000

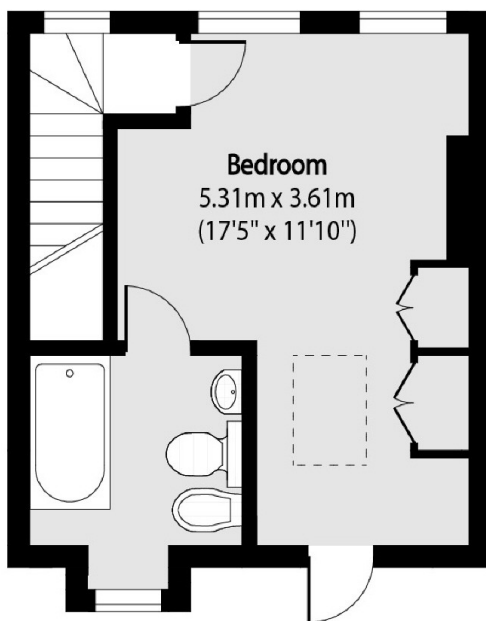
A spacious split level apartment offering two double bedrooms and two bathrooms. The property is situated on the first and second floors and has further potential to extend subject to planning consents.

Kinnoul Road is a popular residential location situated within easy reach of the River Thames, Barons Court and West Kensington stations. You have a lot of local shops and cafes nearby and you minutes away from The Famous Queens Tennis Club.

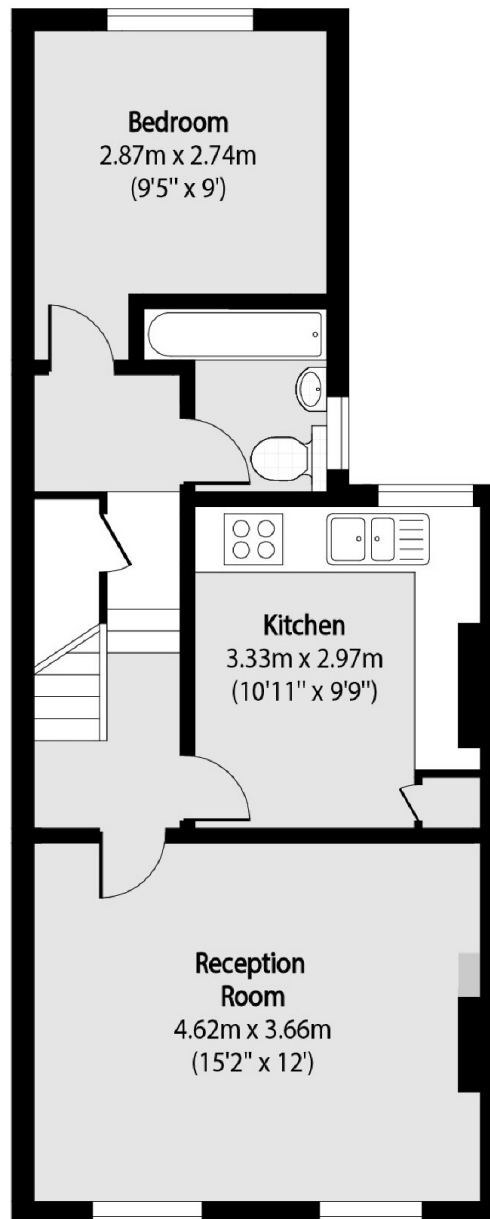
Features

- 999 Year Lease
- Two Bedrooms
- Residential Location
- Two Bathrooms
- Split Level
- Great Size

Kinnoul Road, London, W6



Second Floor



First Floor

Total area (approx): 73.48 sq m (791 sq. ft)