



Lanfrey Place, W14
£950,000

Dexters



Lanfrey Place, W14

This stunning three double bedroom house with two bathrooms is situated in a quiet Mews in West Kensington. The property has a large naturally lit reception room with dining space and double doors leading to a large patio garden.

Lanfrey Place is located off North End Road and is close to West Kensington, Barons Court and West Brompton stations.

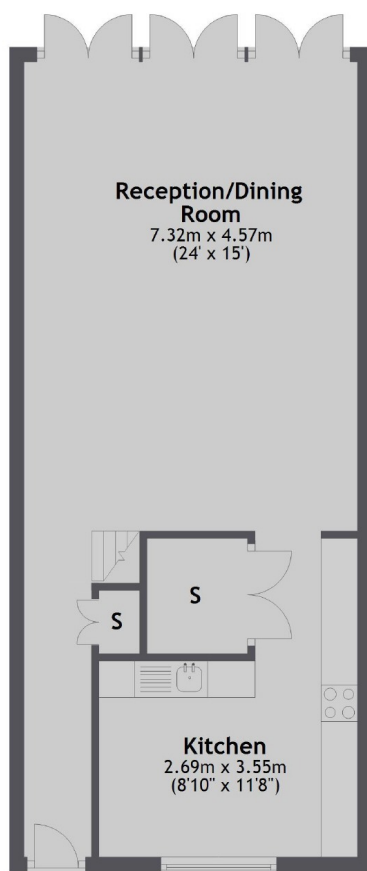
Features

- Three Bedrooms
- Two Bathrooms
- Quiet Mews
- Wooden flooring
- Excellent Transport Links
- Private Garden

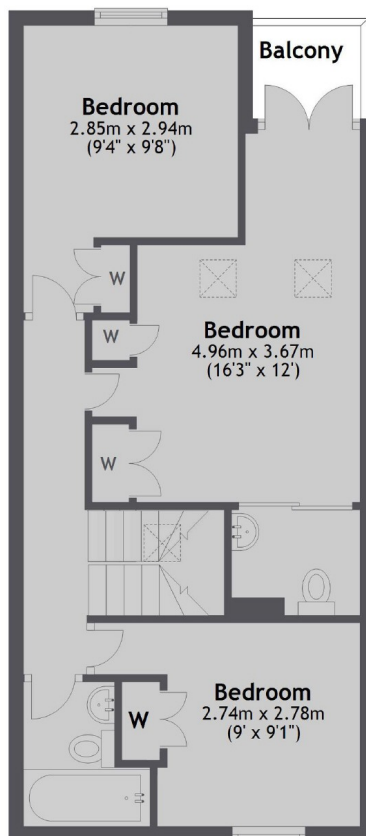


Lanfrey Place, London, W14

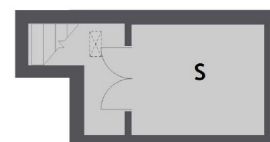
Ground Floor



First Floor



Second Floor



Total area: approx. 100.6 sq. metres (1082.9 sq. feet)