



Beaumont Crescent, W14

£750,000

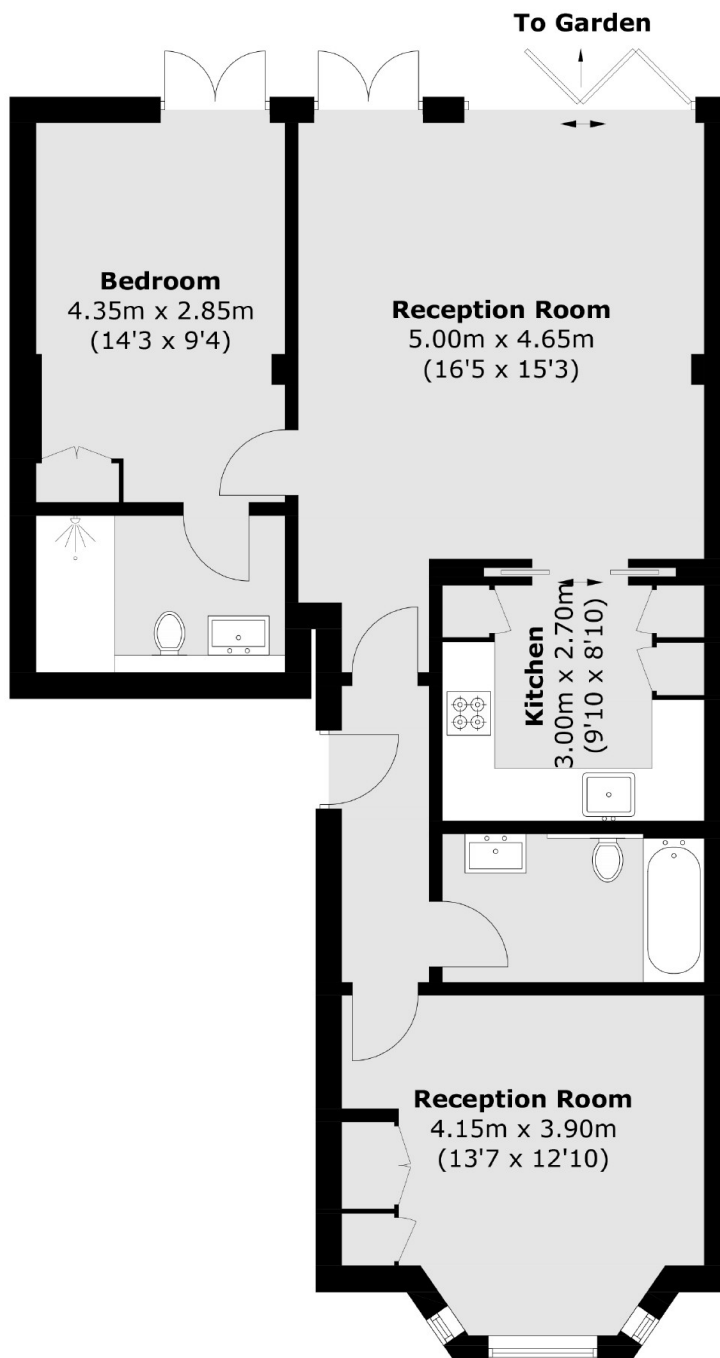
A great size two bedroom, two bathroom apartment with a private patio garden. This property comes with 828 sq/ft of space and has been refurbished to lovely standard throughout with an open plan living area and bi-fold doors onto the garden.

Beaumont Crescent is moments away from West Kensington and Barons Court stations, as well as the local shops and the A4 for easy access into and out of central London.

Features

- No Onward Chain
- Two Bedrooms
- Two Bathrooms
- Private Garden
- Modern
- 828 Sq/Ft

Beaumont Crescent, London, W14



Lower Ground Floor

Total area (approx.): 76.9 sq. m (828.0 sq. ft)