



Aisgill Avenue, W14

£745,000

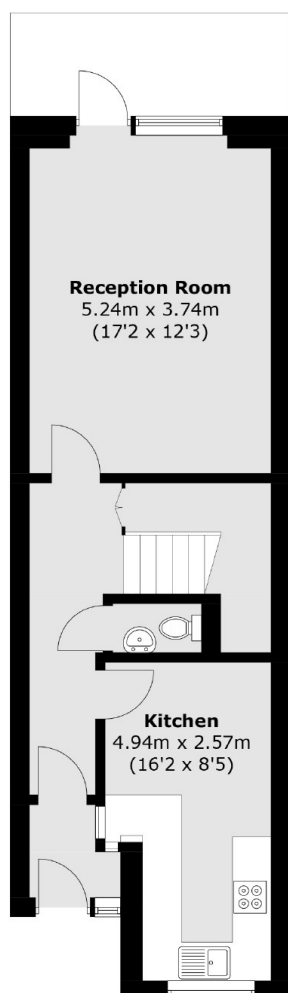
This substantial three storey family home offers ample space, with four very good sized bedrooms and three bathrooms. This property also contains both the front and back gardens provide outdoor space.

Aisgill Avenue is located in the West Kensington estate and is best accessed off Beaumont crescent. Well placed for West Kensington and Barons Court underground station and the A4 for easy access into and out of central London.

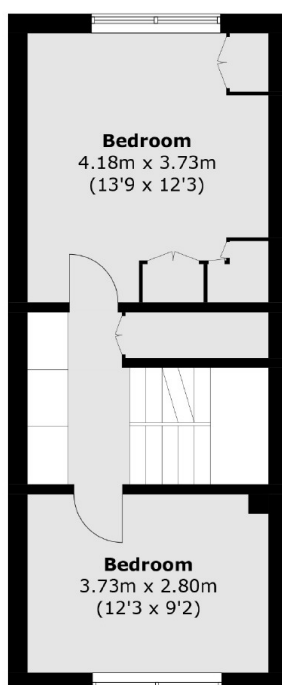
Features

- Freehold
- Four Double Bedrooms
- Spacious
- Ideal Investment
- Close To Public Transport

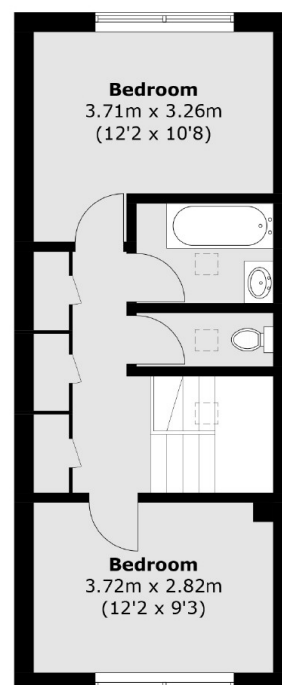
Aisgill Avenue, London, W14



Ground Floor



First Floor



Second Floor

Total area (approx.): 120.7 sq. m (1,299.1 sq. ft)