



## Cheesemans Terrace, W14

£595,000

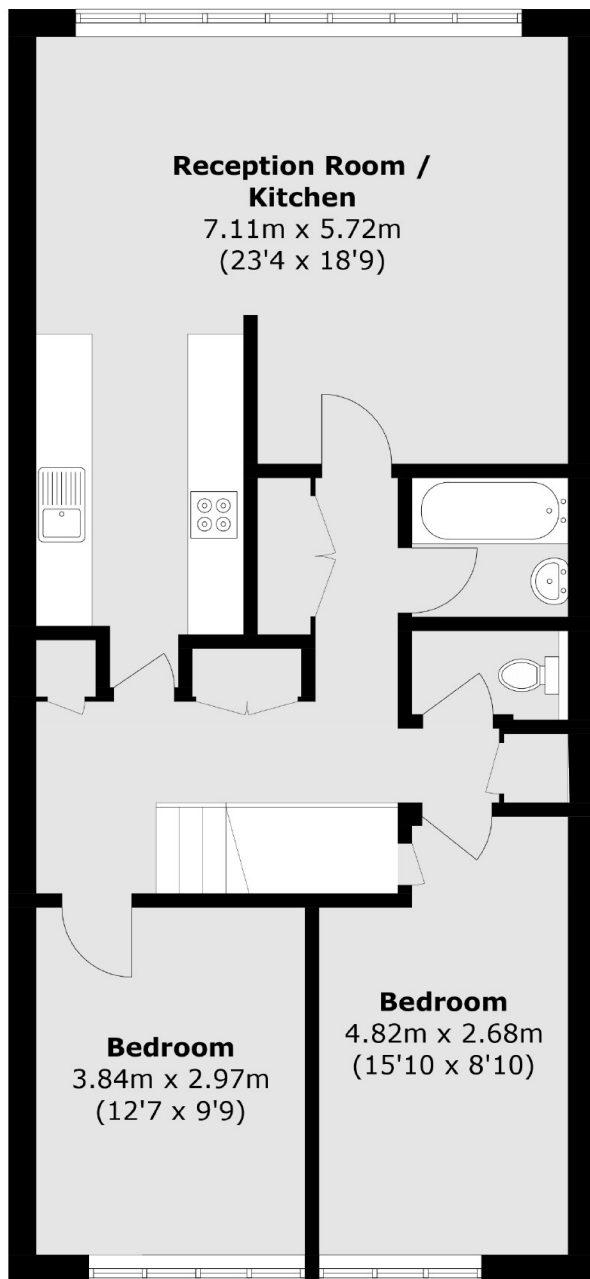
A spacious split-level two bedroom apartment situated in a popular purpose built development with lift service. The property has been newly refurbished throughout and offer great size rooms, long leasehold and no onward chain.

Cheesemans Terrace is located off Star Road within walking distance to popular local shops and restaurants. You have excellent transport links in this area with Barons Court, West Kensington and West Brompton station close by.

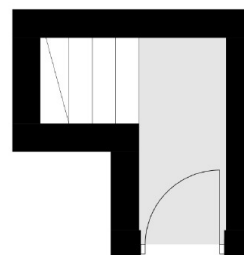
### Features

Long Leasehold  
Two Bedrooms  
Split-Level  
Close To Tubes  
Lift Service  
Modern

# Cheesemans Terrace, London, W14



**First Floor**



**Second Floor**

Total area (approx.): 78.1 sq. m (840.7 sq. ft)