



Greyhound Road, W14

£435,000

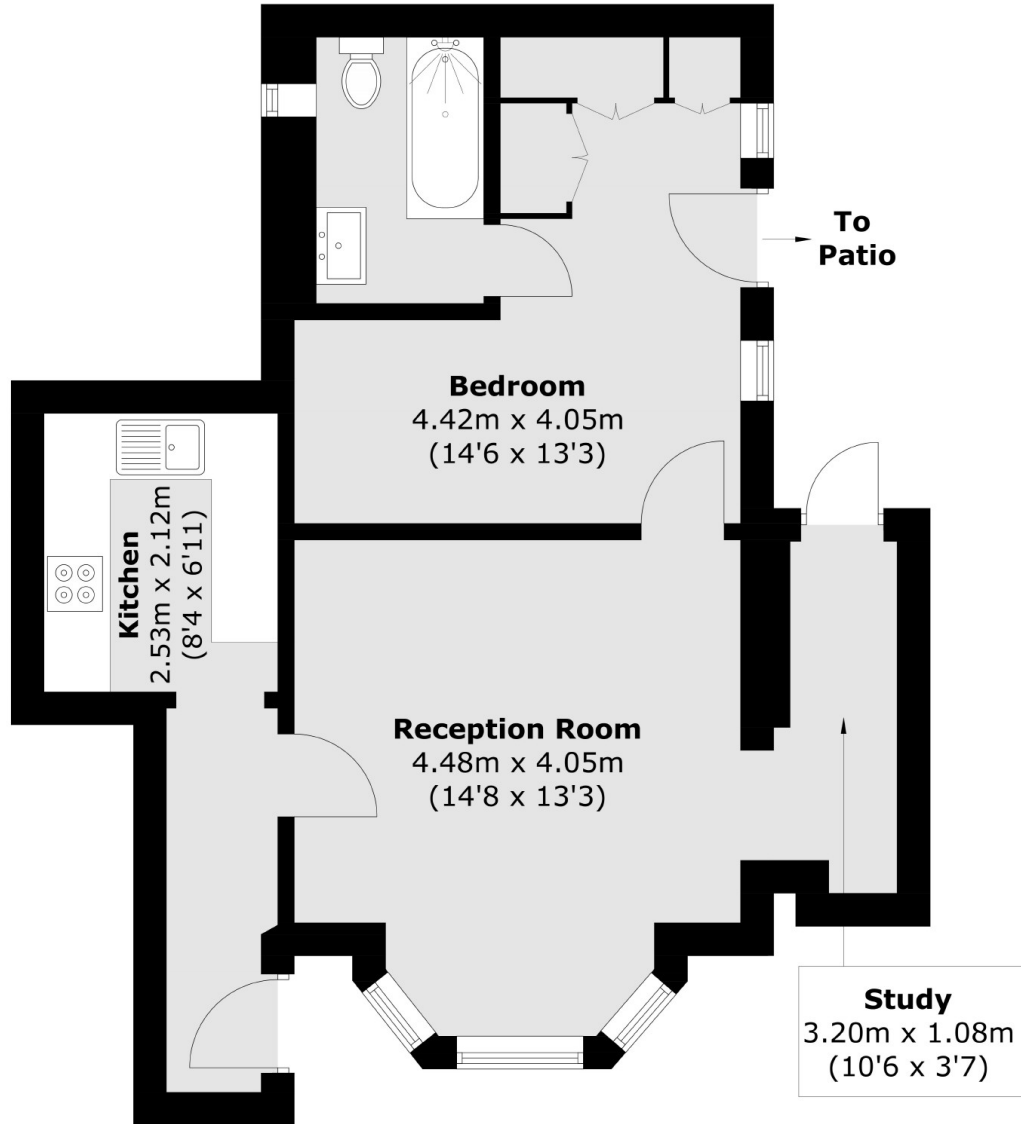
A spacious and well presented one bedroom apartment with access to a patio garden area. This property feels like home as soon as you walk through the door and has been tastefully well cared for and offers excellent value for money.

This property is situated in a popular residential location close to Barons Court and West Kensington station and on the doorstep to the famous Queens Tennis Club. You have a fantastic choice of local pubs, restaurants and independent shops and the River Thames close by.

Features

- Share Of Freehold
- 520 Sq/ft
- Wooden Floors
- Lots Of Storage
- Office Space
- No Chain

Greyhound Road,
London, W14



Total area (approx.): 49.0 sq. m (527.4 sq. ft)