



Charleville Road, W14

£2,450 Per calendar month

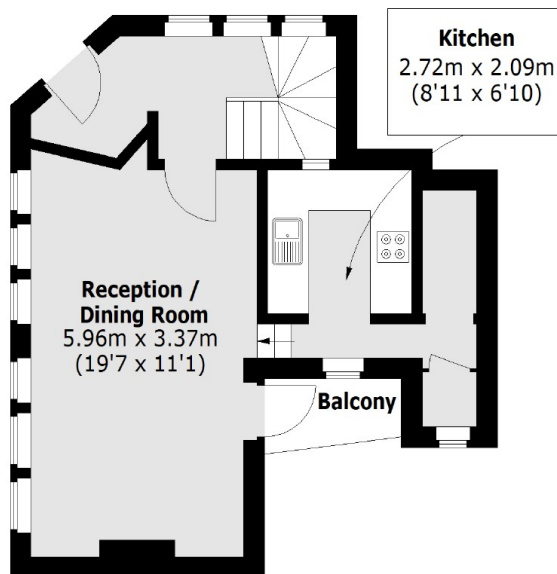
A unique split level maisonette is arranged over two floors with two good sized bedrooms (one en- suite), a large reception room, modern kitchen and additional bathroom with shower. Also benefits from a small patio garden and balcony.

Charleville Road is a highly sought after location just moments from Barons Court and West Kensington underground stations, the local shops and the A4 for easy access into and out of Central London.

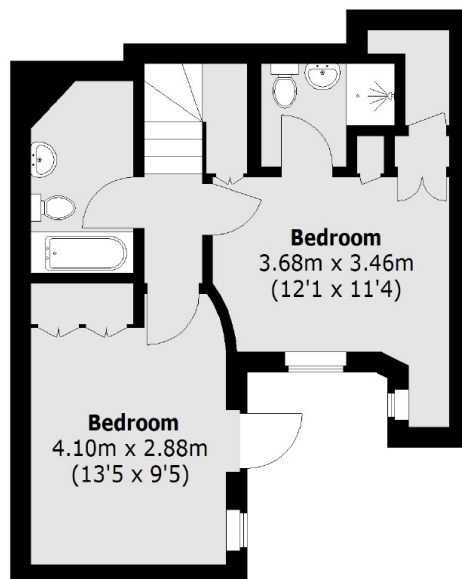
Features

- Two Bedrooms
- Two Bathrooms
- Large Reception
- Good Storage
- Split Level
- Outside Space

Charleville Road, London, W14



Ground Floor



Lower Ground Floor

Total area (approx.): 71.2 sq. m (766.3 sq. ft)
Balcony Area : 1.9 sq. m (20.4 sq. ft)