



Edith Road, W14
£999,999

Dexters



Edith Road, W14

A beautifully designed three bedroom apartment offering spacious split-level living with over 1200sq/ft of space and a private terrace.

This Victorian property is situated on an attractive tree lined residential road and located in a well maintained building. You have a fantastic open plan living area on the first floor with ample space to entertain and dine as well as a private terrace. The three bedrooms are light, have plenty of storage and the family bathroom and separate w.c have been newly modernised.

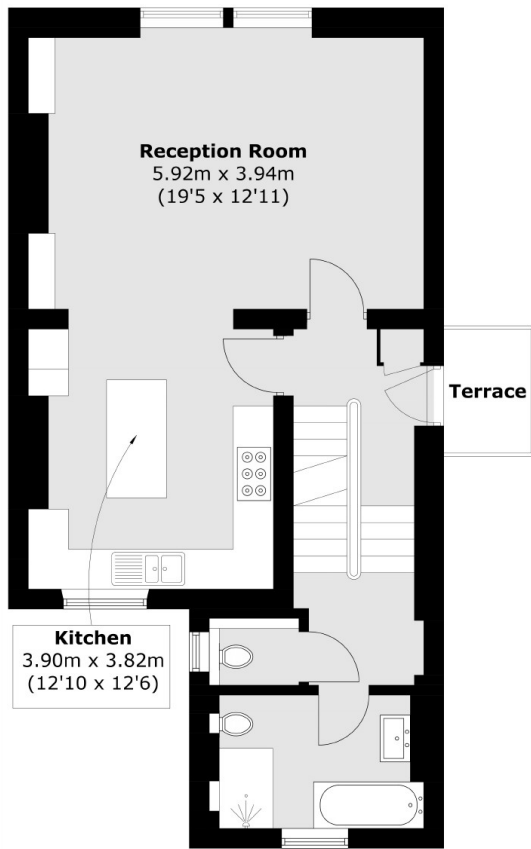
Located in probably one of the best roads in West Kensington within two hundred yards to Barons Court underground station and the A4 for easy access into and out of Central London.

Features

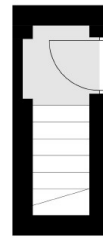
- Long Leasehold
- Excellent Condition
- Close To Tubes
- Spacious
- Split Level
- Three Bedrooms



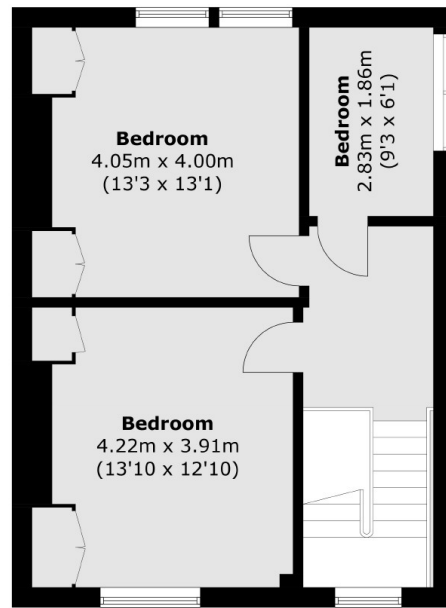
Edith Road,
London, W14



First Floor



Ground Floor



Second Floor

Total area (approx.): 114.1 sq. m (1,228.2 sq. ft)
Terrace area (approx.): 2.4 sq. m (25.8 sq. ft)