



Beaumont Crescent, W14

£750,000

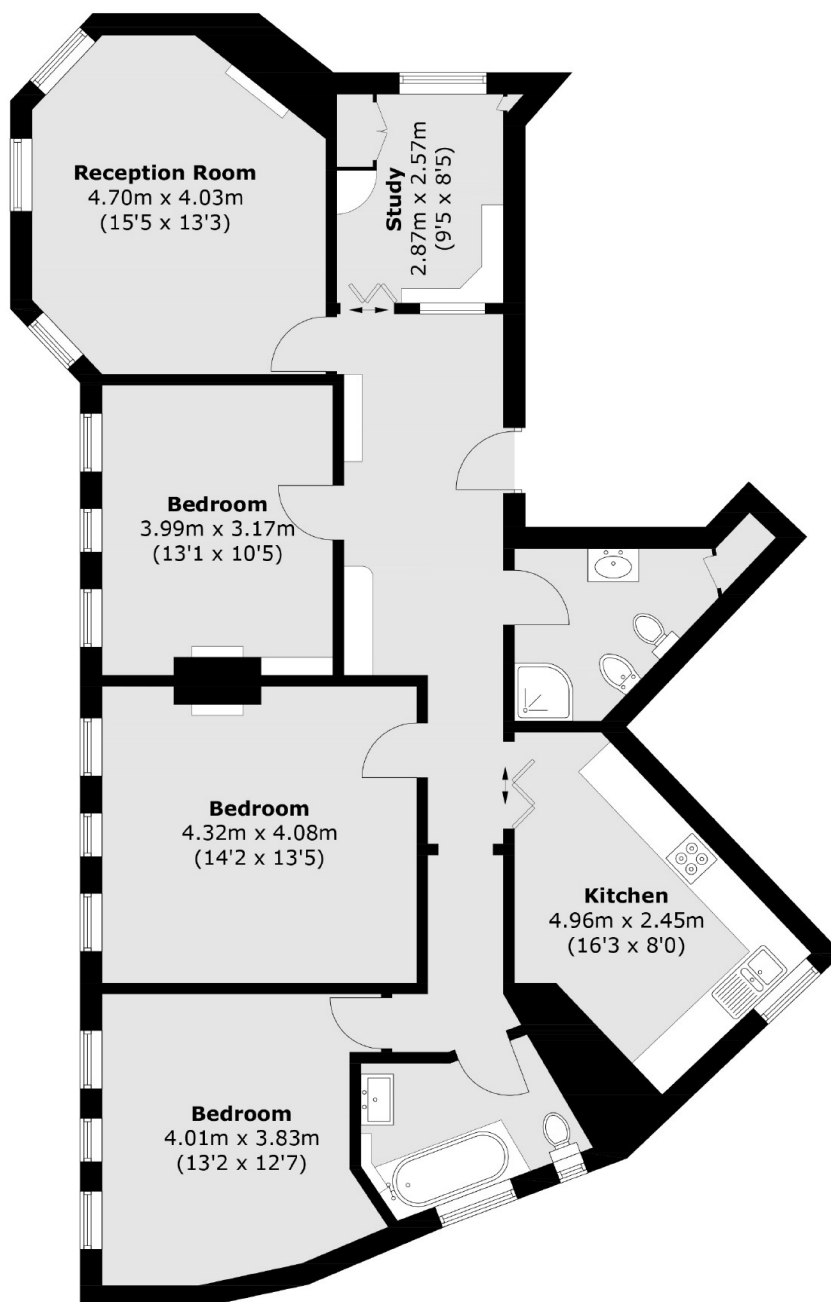
This property boasts four bedrooms and two bathrooms and offers superb natural light throughout. Situated in a popular mansions development and sold with no onward chain and share of freehold.

West Kensington Mansions is located on North End Road next to numerous local facilities and less than 200 yards to West Kensington underground station and A4 for easy access into central London.

Features

Four Bedrooms
Two Bathrooms
Wooden Floors
Over 1200Sq/ft
Share Of Freehold
Close To Tubes

Beaumont Crescent, London, W14



Total area (approx.): 115.0 sq. m (1,237.8 sq. ft)