



## Greyhound Road, W14

£3,500 Per calendar month

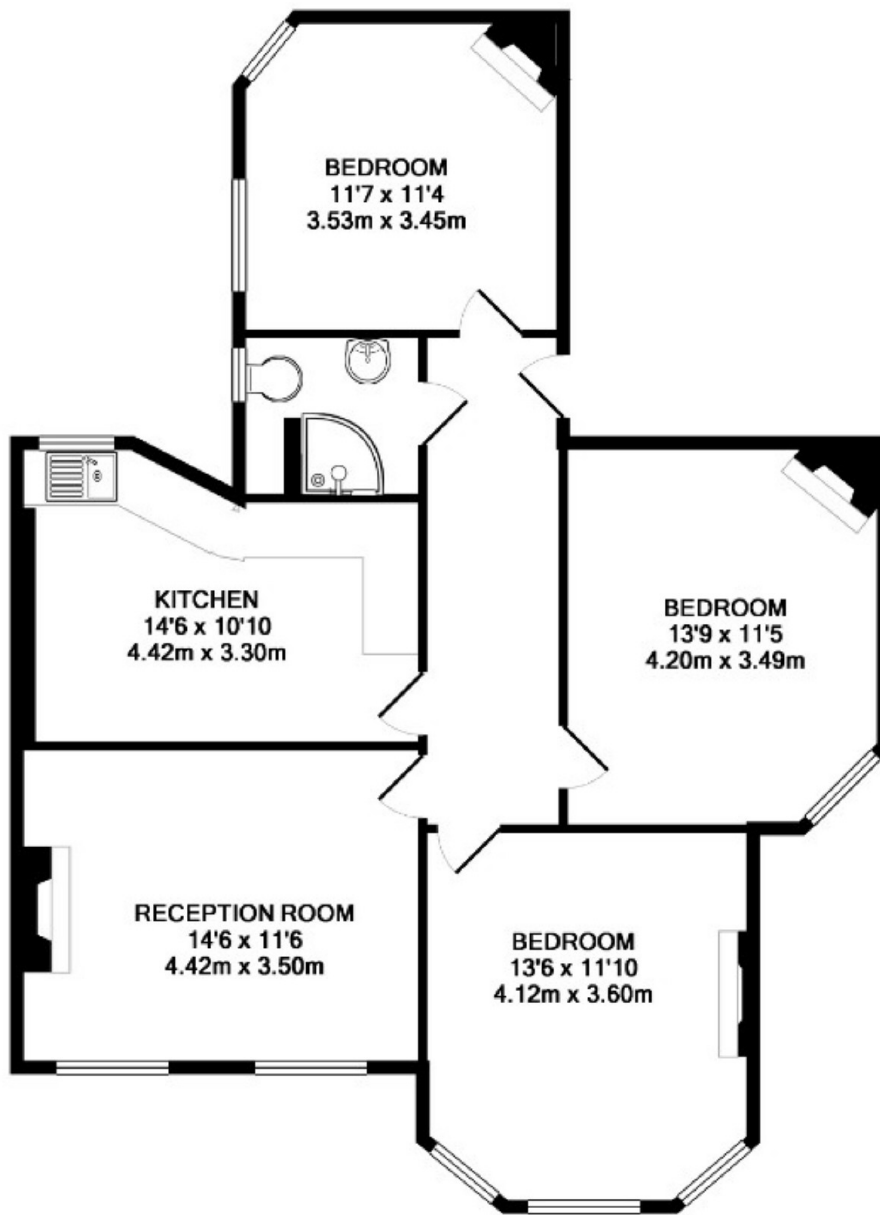
This three double bedroom apartment is located in the unique and characteristic surroundings of Queens Club Gardens. The apartment consists of a spacious lounge, gated resident gardens and tennis courts, fully fitted eat-in kitchen and modern bathroom.

Queens Club Gardens is located just South off Queens Club within five hundred yards to either Barons Court or West Kensington underground stations and within a mile to the facilities in Fulham, Earls Court and Kensington.

### Features

- Three Double Bedrooms
- Eat In Kitchen
- Queen's Club Gardens
- Communal Gardens
- Wooden Floors
- Tennis Courts

Greyhound Road,  
London, W14



KINGSLEY MANSIONS W14  
TOTAL APPROX. FLOOR AREA 857 SQ.FT. (79.6 SQ.M.)

All measurements taken to RICS Guidelines for Gross Internal Area. Whilst every attempt has been made to ensure the accuracy of the floor plan contained here, all measurements are approximate and no responsibility is taken for any error, omission or misstatement. This plan is for illustrative purposes only and should be used as such by any prospective purchaser. The services, systems and appliances shown have not been tested and no guarantee as to their operability or efficiency can be given.

Made with Metropix ©2013