



Castletown Road, W14

£999,950

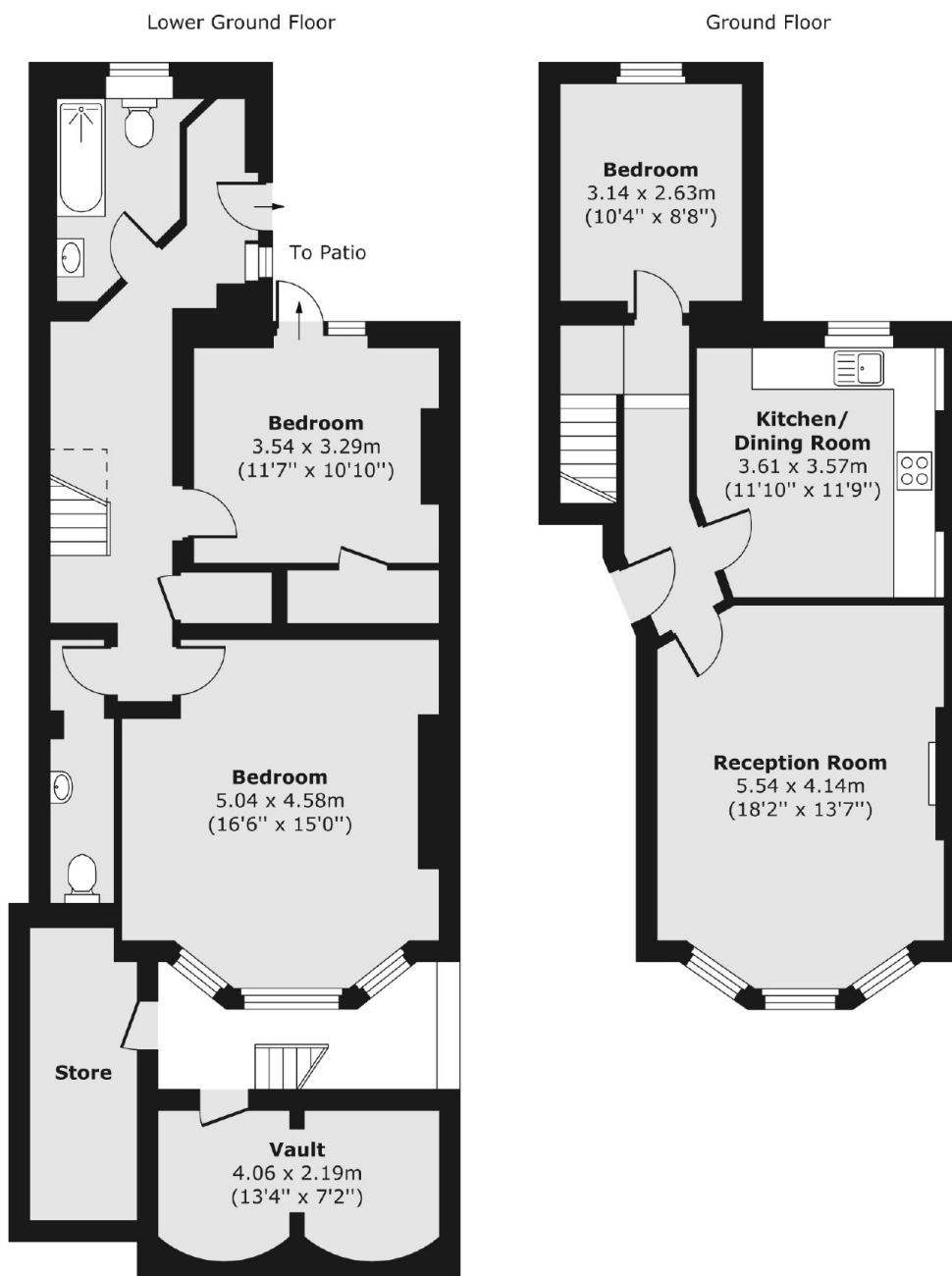
A substantial raised and lower ground floor, three double bedroom maisonette with large bright reception room. The property is in lovely condition through-out with two bathrooms, patio garden and potential to extend further subject to planning permission.

Castletown road is a popular, sought after residential road within two hundred yards to West Kensington and Barons Court Road underground station and the A4 for easy access into and out of central London.

Features

- Three Double Bedrooms
- Low Out Goings
- Further Scope To Extend
- No Onward Chain
- Leasehold
- High Ceilings

Castletown Road, London, W14



Total area (approx.) 110.04 sq. m (1,184 sq. ft)
Store area (approx.) 6.39 sq. m (69 sq. ft)
Vault area (approx.) 8.38 sq. m (90 sq. ft)