



## Queen's Club Gardens, W14

£550,000

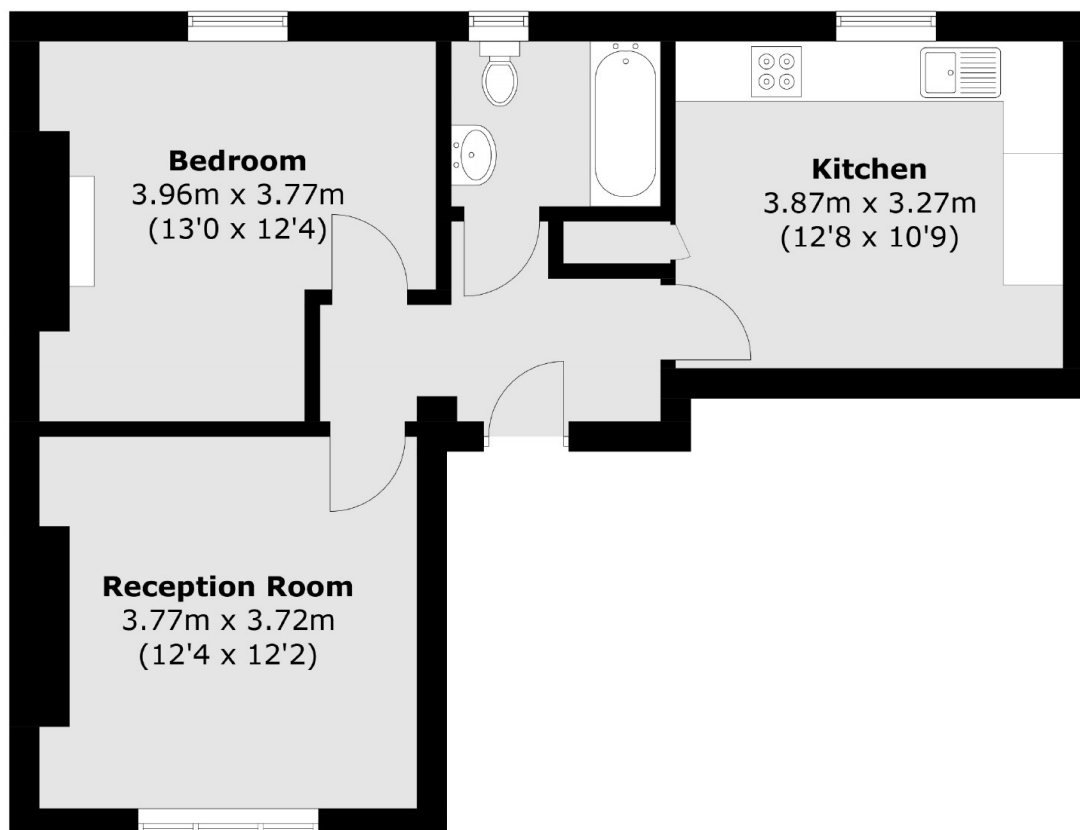
A beautiful one bedroom flat located on the second floor in the very popular Queens Club Gardens estate. Boasting a separate kitchen, spacious bedroom and a living room that has views of the stunning private gardens and tennis courts making this a must see property.

Queens Club Gardens is located just south of the famous Queens Club, within half a mile of either Barons Court or West Kensington underground stations.

### Features

- Close To Transport Links
- Communal Gardens
- Separate Kitchen
- Communal Tennis Courts
- Spacious
- Good Lighting

# Queen's Club Gardens, London, W14



Total area (approx.): 51.4 sq. m (553.3 sq. ft)