



Beaumont Crescent, W14

£3,000 Per calendar month

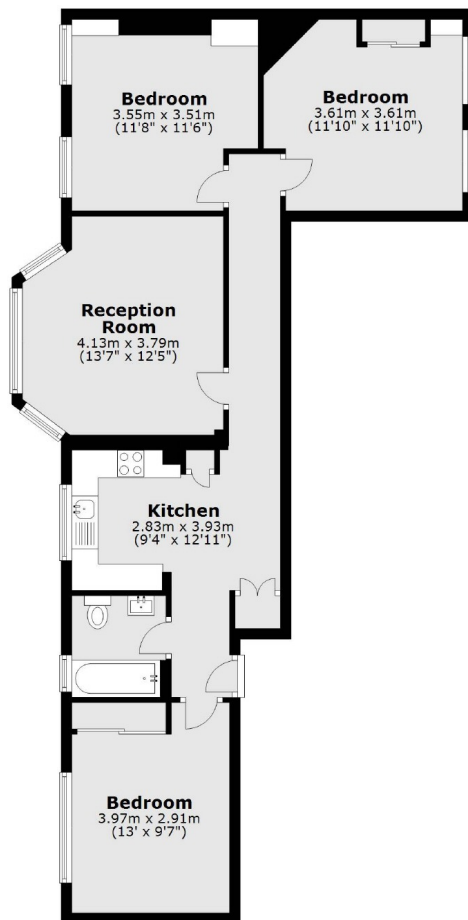
This three double bedroom apartment is based in a private Mansion block close to West Kensington station suitable for two sharers or a family only. The property is bright and spacious with a separate modern eat in kitchen and wood floor throughout.

West Kensington Mansions is a well maintained development and is moments from West Kensington, Barons Court and West Brompton stations.

Features

- Three Bedrooms
- Separate Reception
- Mansion Block
- Eat In Kitchen
- Close To Station
- Modern Finish

Beaumont Crescent, London, W14



Total area: approx. 76.2 sq. metres (820.2 sq. feet)