



Edith Villas, W14

£3,800 Per calendar month

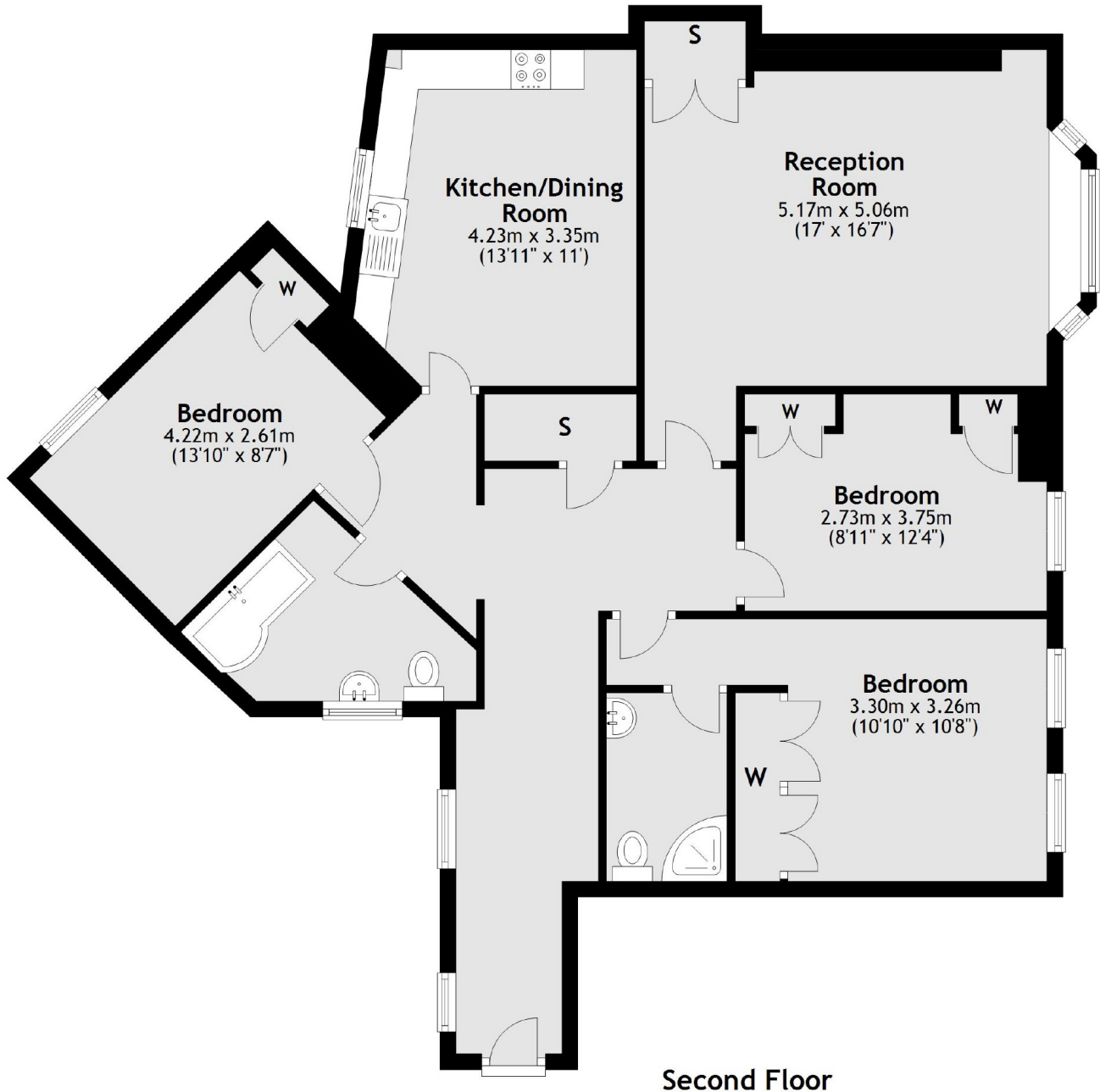
This large three bedroom property is based in a private mansions block in the heart of West Kensington. The property has a large reception room, a separate eat in kitchen and two bathrooms.

Edith Villas is close to all the local shops, cafés, bars and restaurants that West Kensington, Kensington Olympia, Barons Court and Hammersmith have to offer.

Features

- Three Bedrooms
- Two Bathrooms
- Private Mansion Block
- Eat In Kitchen
- Close To Transport Links
- 106 Sqm

Edith Villas,
London, W14



Total area: approx. 106.2 sq. metres (1143.2 sq. feet)