

## Lampeter Square, W6

£395,000

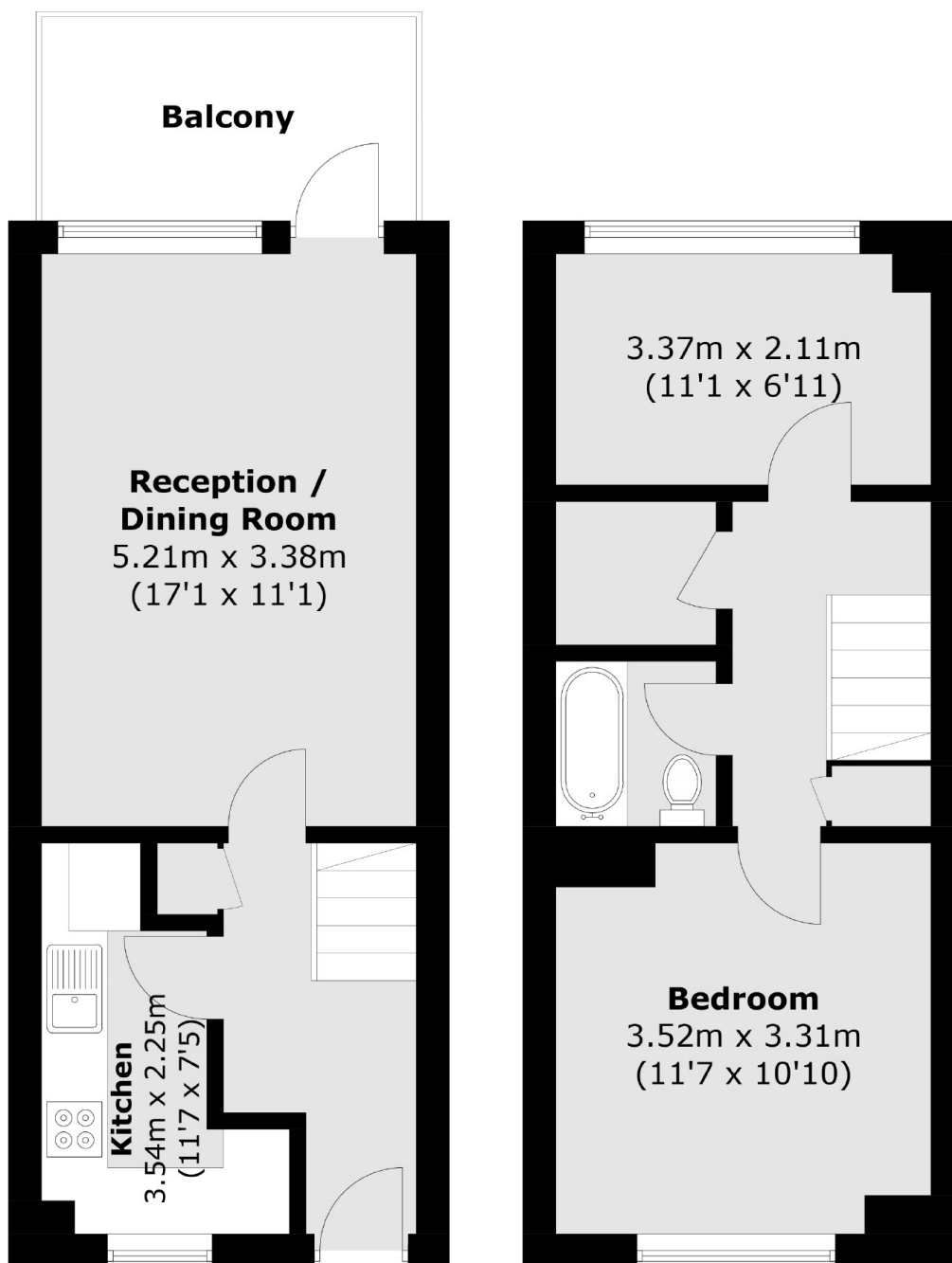
This great sized maisonette is split over two floors offering plenty of space with two double bedrooms and a private balcony. A good investment opportunity with space for a small family to live in.

Conveniently placed between Hammersmith, Fulham and Barons Court, with all three within walking distance. Hammersmith Riverside offers plenty to do along with local shops and restaurants.

### Features

- Two Bedrooms
- Split Level
- Recently Refurbished
- Private Balcony
- Barons Court
- No Chain

# Lampeter Square, London, W6



## Ground Floor

## First Floor

Total area (approx.): 60.8 sq. m (654.4 sq. ft)  
Balcony area: 6.3 sq. m (67.8 sq. ft)