



## Castletown Road, W14

£550,000

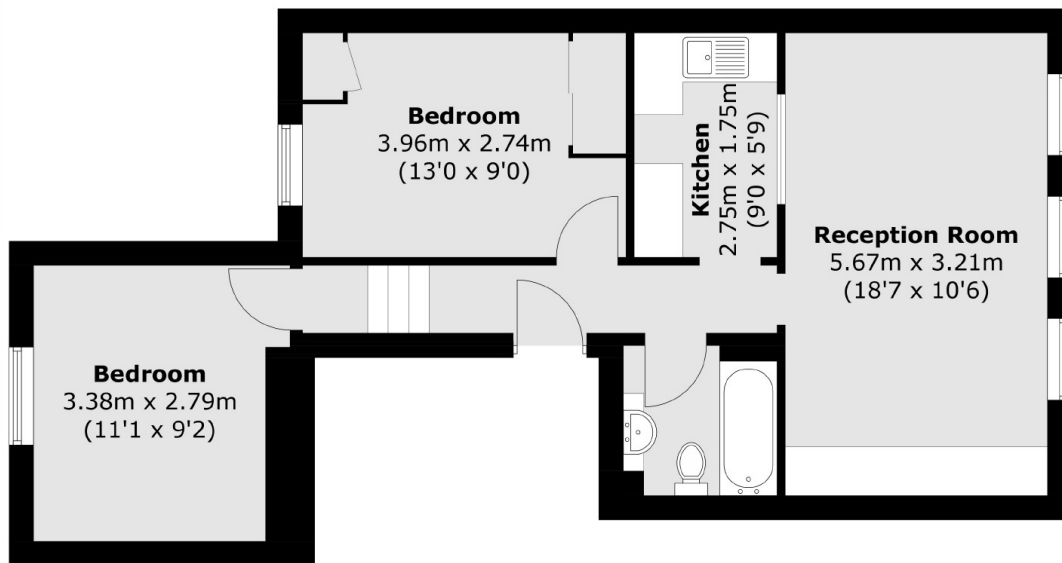
This charming second-floor two-bedroom flat on Castletown Road, offers abundant natural light and situated in West Kensington. This well maintained property features spacious living areas, and large windows that flood the space with sunlight.

Castletown Road is a popular, sought after residential road within 200 yards to West Kensington Underground station and the A4 for easy access into and out of central London. The numerous shops, bars and restaurants on Kensington High Street are within a mile.

### Features

- Share of Freehold
- Close To Tube
- No Chain
- Popular Location
- Two Bedroom
- Good Natural Light

# Castletown Road, London, W14



Total area (approx.): 54.8 sq. m (589.9 sq. ft)