



Lisgar Terrace, W14

£995,000

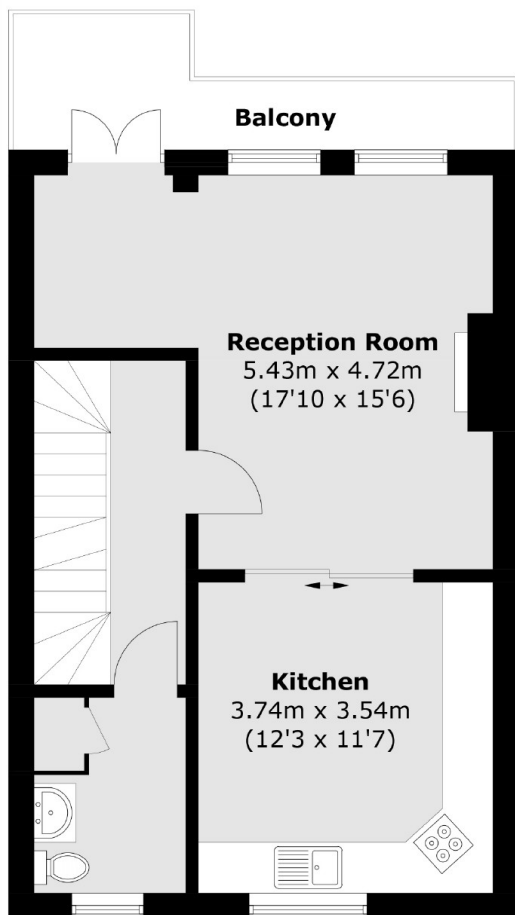
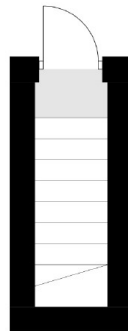
A bright and well presented three bedroom apartment with a private full length balcony. This property offers split level living on the first and second floor, a superb spacious open plan living with kitchen area and two bathrooms.

Lisgar Terrace is located within easy reach of Kensington High Street and Holland Park. You have excellent transport links close by with West Kensington, Barons Court and Olympia Station. Numerous shops and restaurants are also within easy walking distance.

Features

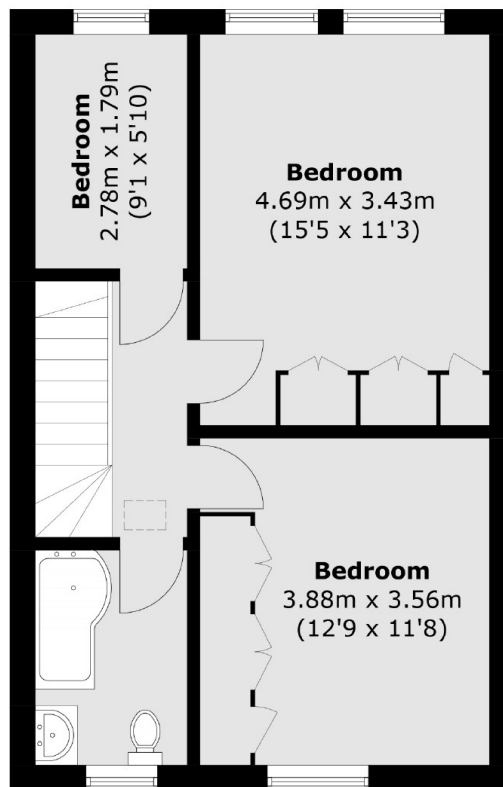
- Share Of Freehold
- Three Bedrooms
- Private Balcony
- Spacious
- Excellent Location
- Split Level

Lisgar Terrace, London, W14



Ground Floor

Lower Ground Floor



First Floor

Total area (approx.): 95.5 sq. m (1,027.9 sq. ft)
Balcony area: 6.5 sq. m (70.0 sq. ft)