



## Fitzgeorge Avenue, W14

£650,000

A spacious and bright two bedroom apartment situated in a popular development with lift service. The property is in good condition throughout and would make an ideal investment or home.

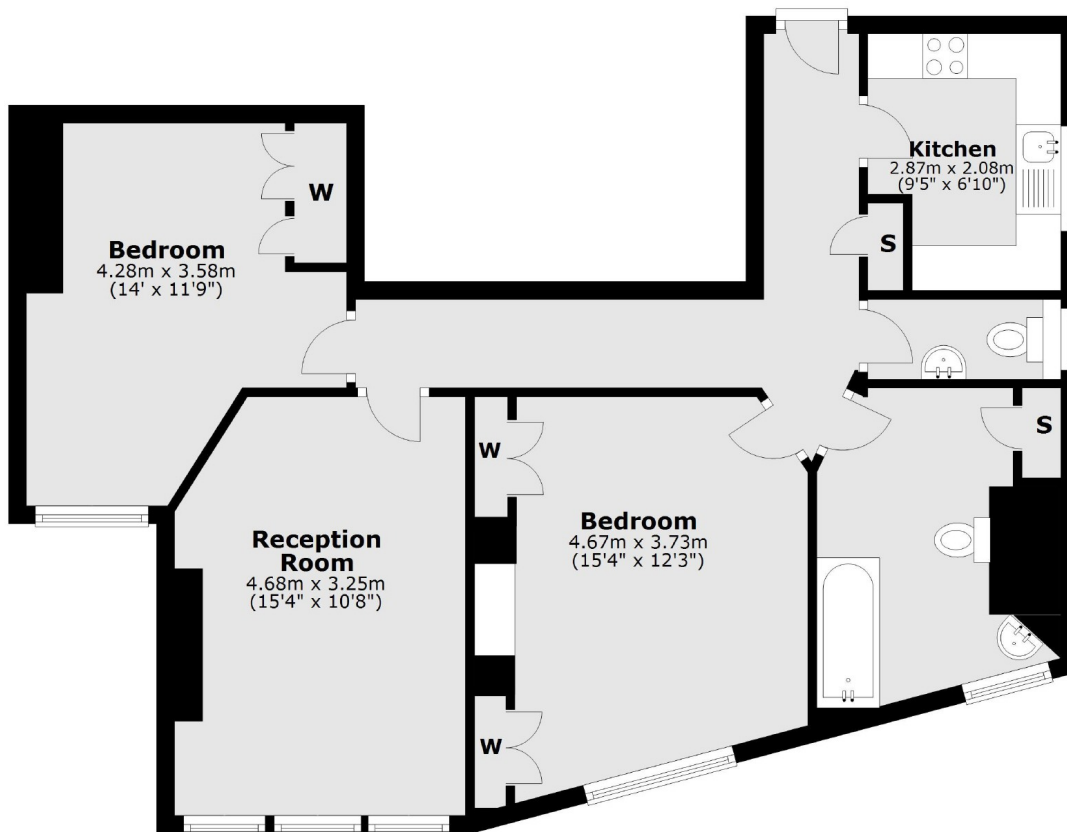
Fitzgeorge Avenue is a popular tree lined road on the edge of Kensington High Street. Nearest stations are Kensington Olympia and West Kensington and the A4 is nearby for easy access into and out of Central London.

### Features

- Share Of Freehold
- Two Double Bedrooms
- No Chain
- Second Floor
- Great Location
- Gated Development

# Fitzgeorge Avenue, London, W14

## Second Floor



Total area: approx. 72.1 sq. metres (775.8 sq. feet)