



Edith Villas, W14

£2,500 Per calendar month

Heating and hot water included. A fantastic two double bedroomed apartment located in this prestigious mansion building in central West Kensington. The property is 90.2 Sqm, split level and has wooden floors throughout.

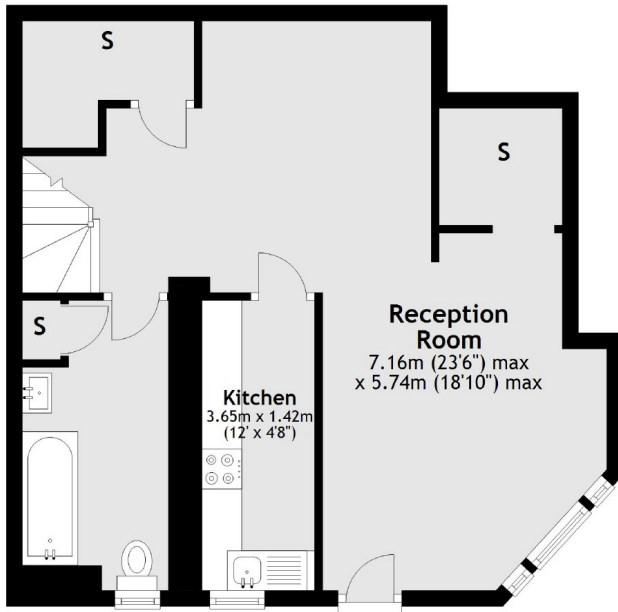
West Kensington Court is conveniently located within 200 yards to West Kensington station and local shops and less than a mile to the numerous facilities in Kensington High Street.

Features

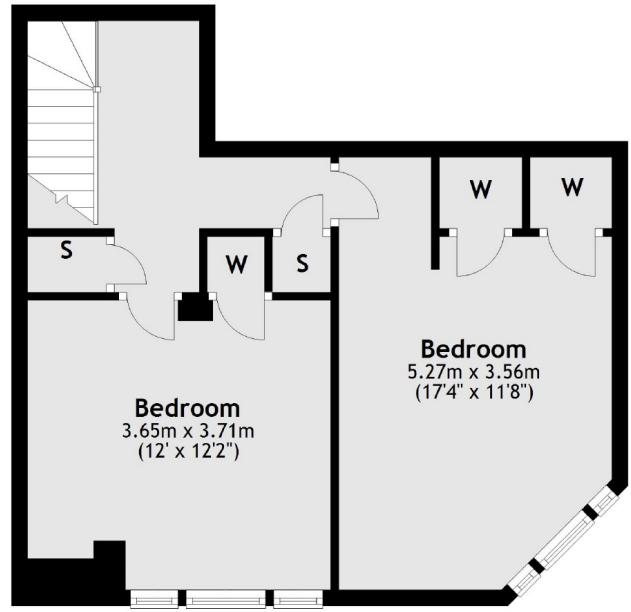
- Two Double Bedrooms
- Modern Kitchen
- Dishwasher
- Split Level
- Heating Included
- Communal Garden

Edith Villas,
London, W14

Ground Floor



First Floor



Total area: approx. 90.2 sq. metres (970.6 sq. feet)