



Edith Villas, W14

£370,000

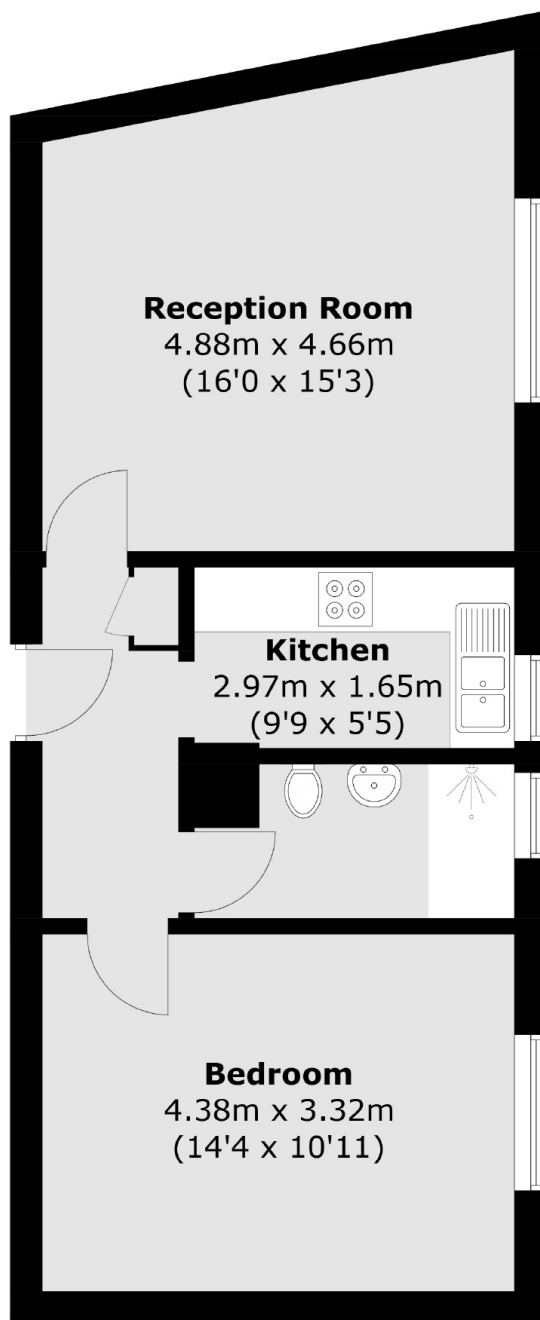
A bright and spacious one bedroom apartment situated in a popular purpose built development with lift service. The property is sold with share of freehold, no onward chain and would suit a first time buyer or investor.

West Kensington Court is conveniently located within two hundred yards to West Kensington underground station. The numerous facilities in Earls Court and Kensington are within a mile.

Features

- Share Of Freehold
- 24 Hour Porters
- Lift Service
- Communal Heating
- Goods Lift
- Bike Storage

Edith Villas,
London, W14



Total area (approx.): 48.8 sq. m (525.3 sq. ft)