



Queen's Club Gardens, W14

£4,000 Per calendar month

A 93 meter square three double bedroom first floor apartment in this exclusive Victorian Mansion block with residents tennis courts and landscaped gardens. This property has a large lounge, modern fitted eat in kitchen and modern bathroom.

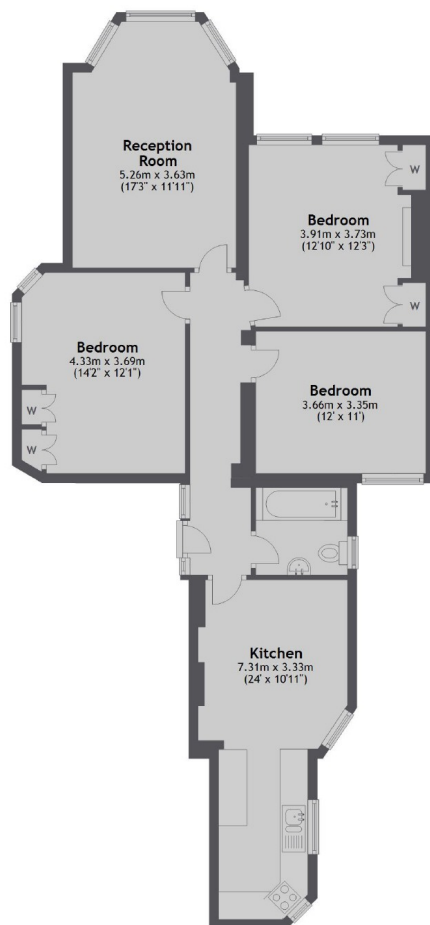
Queens Club Gardens is a popular private development with exclusive access to grounds and tennis courts. It is located just 0.5 miles from both West Kensington tube station and Barons Court tube station.

Features

Three Bedrooms
Queen's Club Gardens
Eat In Kitchen
High Ceilings
Tennis Courts
Gardens

Queen's Club Gardens, London, W14

First Floor



Total area: approx. 93.1 sq. metres (1002.1 sq. feet)