

Greyhound Road, W6

£275,000

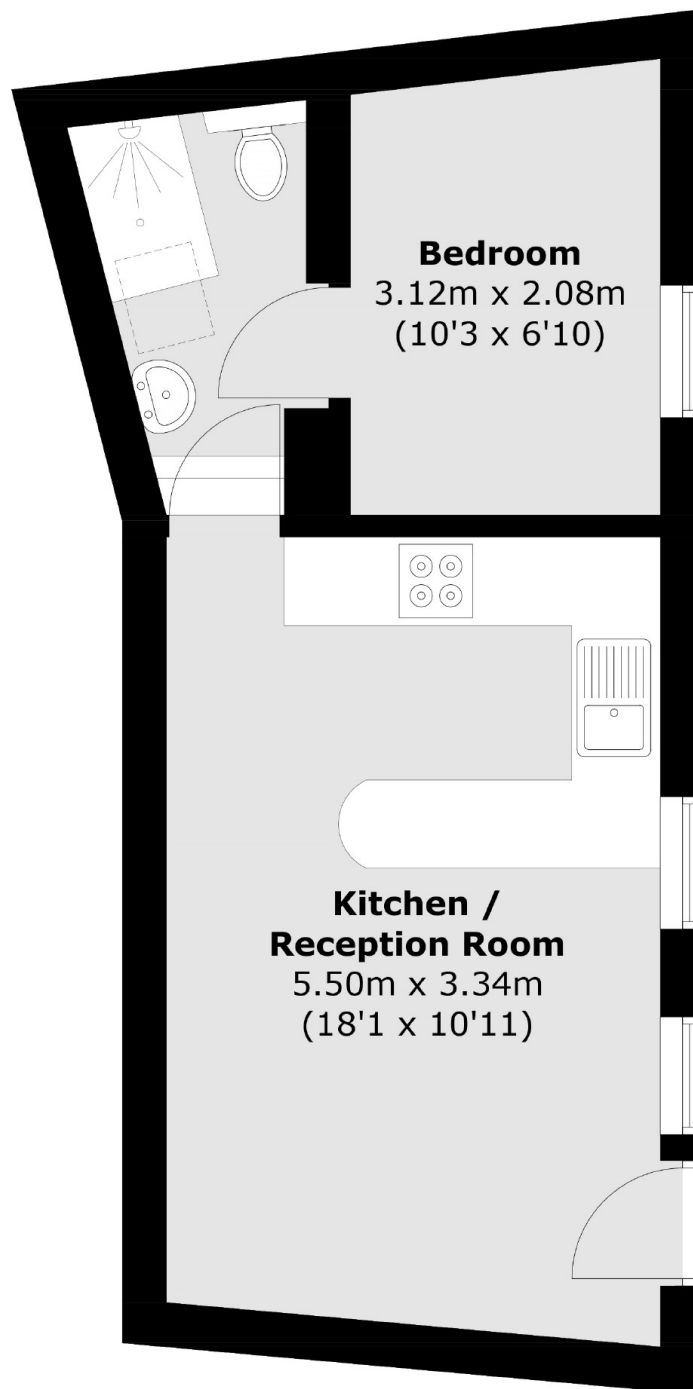
A spacious studio offered with no onward chain and in great condition. The property is unique as it has your own private entrance, lots of natural light and well located to the tubes and river cafes.

This property is situated in a popular residential location close to Barons Court and West Kensington station and on the doorstep to the famous Queens Tennis Club. You have a fantastic choice of local pubs, restaurants and independent shops and the River Thames close by.

Features

- No Chain
- Studio
- Private Entrance
- 999 Leasehold
- Fantastic Location
- Close To Tubes

Greyhound Road, London, W6



Total area (approx.): 29.2 sq. m (314.3 sq. ft)