

North End Road, W14

£450,000

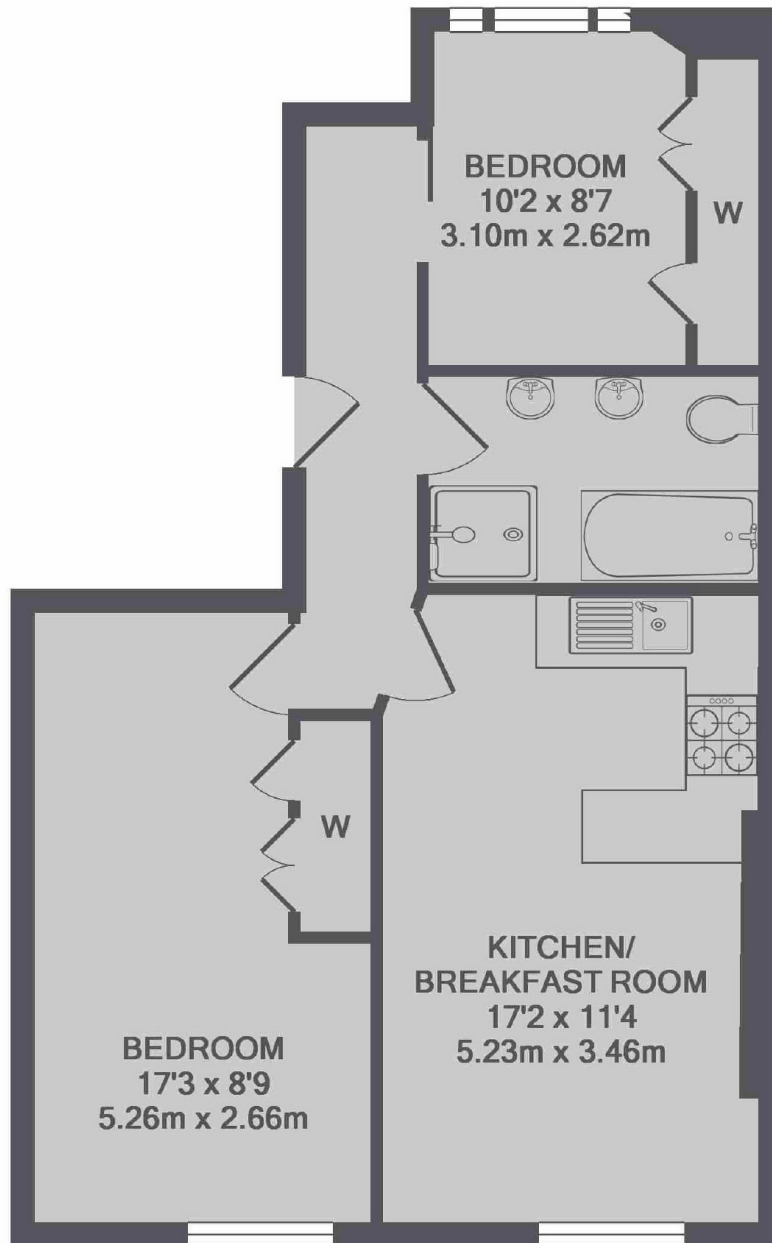
A bright and spacious two bedroom apartment in the heart of West Kensington. Situated on the second floor with open plan reception/kitchen and bathroom.

Conveniently located on North End Road, within two hundred yards to West Kensington underground station and the A4 for easy access into and out of central London. With good bus links to Kensington High Street and Fulham Broadway.

Features

- No Chain
- Great Location
- Two Bedrooms
- Second Floor
- Long Leasehold
- Ideal Investment

North End Road, London, W14



TOTAL APPROX. FLOOR AREA 542 SQ.FT. (50.3 SQ.M.)