



Comeragh Mews, W14

£3,200 PCM

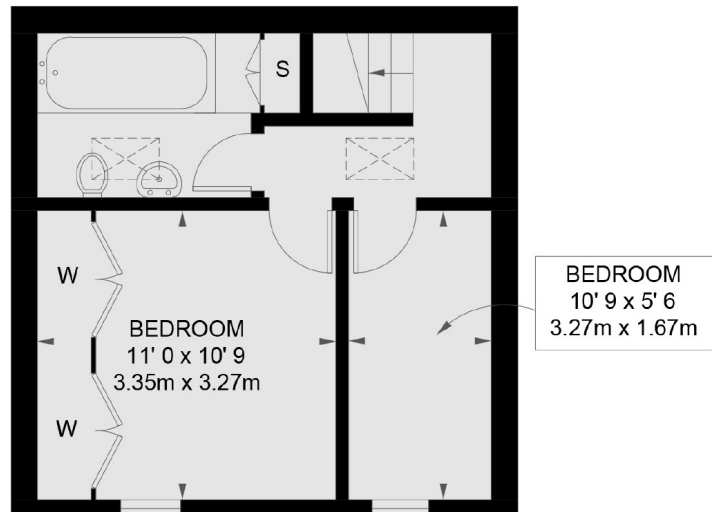
A fantastic three bedroom mews house, arranged over three floors with a flat roof, offering a spacious reception room open plan dining area and a very stylish fitted kitchen.

Comeragh mews is located in a popular sought after development of mews houses. Within two hundred yards to Barons Court or West Kensington stations. The A4 is nearby for access in and out of Central London.

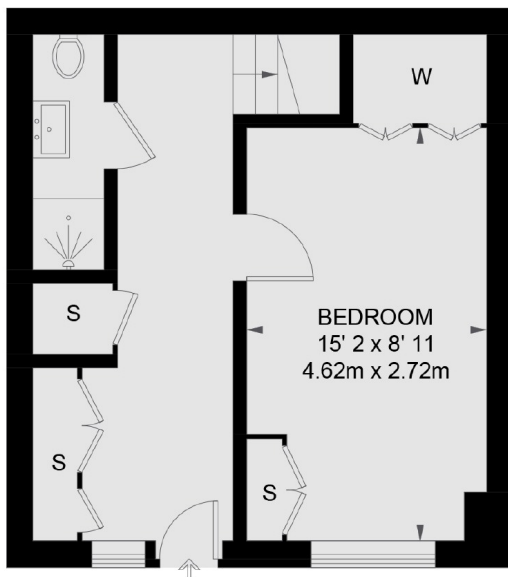
Features

- Mews House
- Split Level
- Three Bedrooms
- Two Bathrooms
- Wooden Floors
- Close To Tube

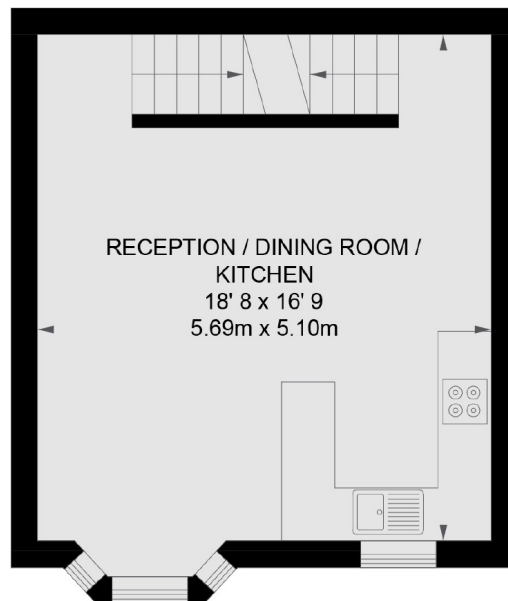
Comeragh Mews, London, W14



SECOND FLOOR



GROUND FLOOR



FIRST FLOOR

TOTAL APPROX. FLOOR AREA 951 SQ. FT. (88.4 SQ. M.)

Dexters

West Kensington
179-181 North End Road
London
W14 9NL
Sales
020 7381 6381

Energy Rating: D. We aim to make our particulars both accurate and reliable. However they are not guaranteed; nor do they form part of an offer or contract. If you require clarification on any points then please contact us, especially if you're traveling some distance to view. Please note that appliances and heating systems have not been tested and therefore no warranties can be given as to their good working order.

 **RICS** | Regulated
Estate Agent
and Letting Agent

dexters.co.uk