



Beaumont Crescent, W14

£725,000

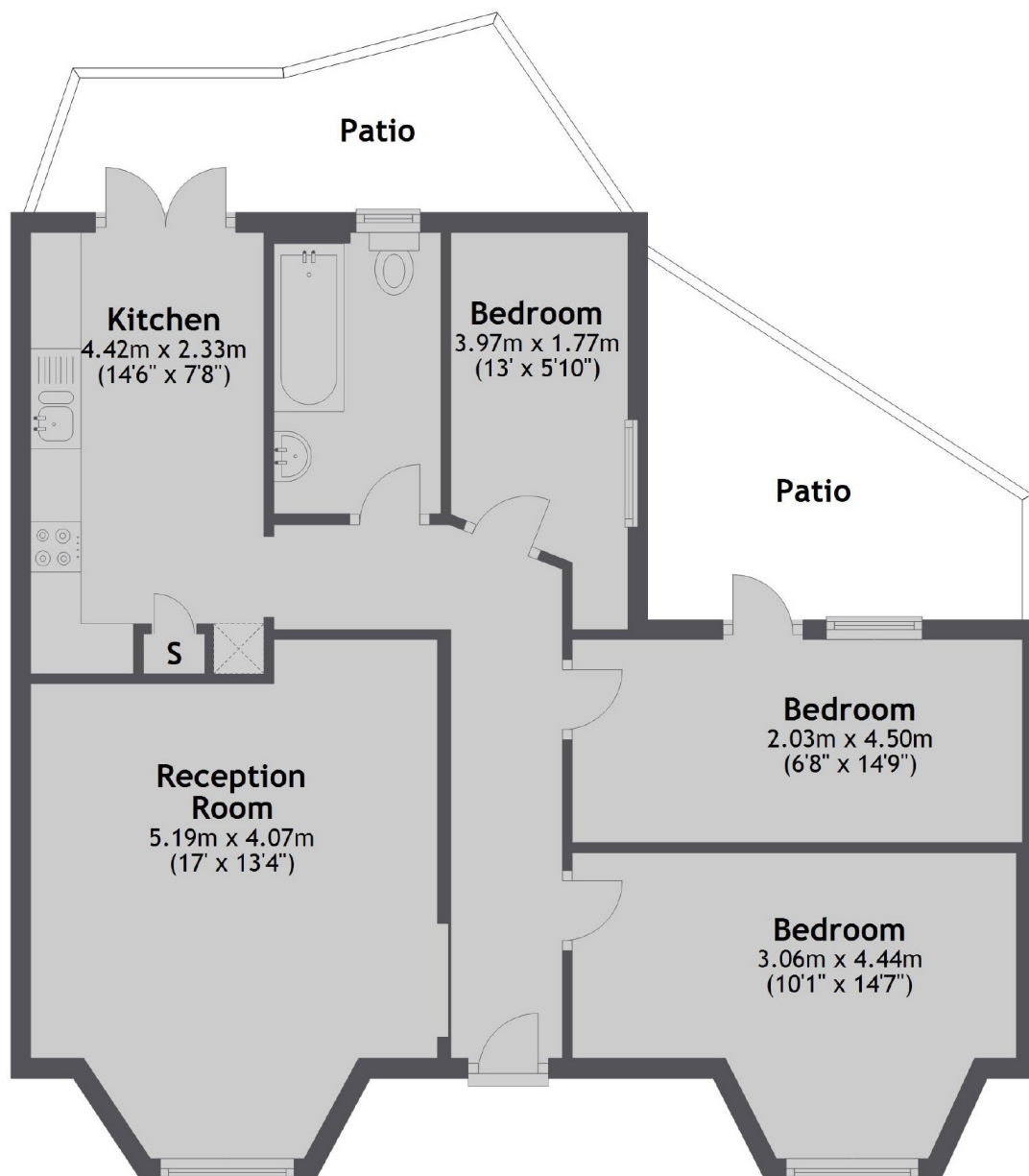
This three bedroom garden flat is based in the heart of West Kensington and has been finished to a high standard throughout. The property has a large separate reception room, an eat in kitchen and two separate outdoor spaces.

Beaumont Crescent is located just off North End Road within 200 yards to West Kensington underground station, local shops and the A4 for easy access into and out of central London.

Features

- Three Bedrooms
- Outside Space
- Good Storage
- Close To Tube
- Victorian Building
- Great Size

Beaumont Crescent, London, W14



Total area: approx. 69.7 sq. metres (750.7 sq. feet)