



## St. Andrews Road, W14

£3,250 Per calendar month

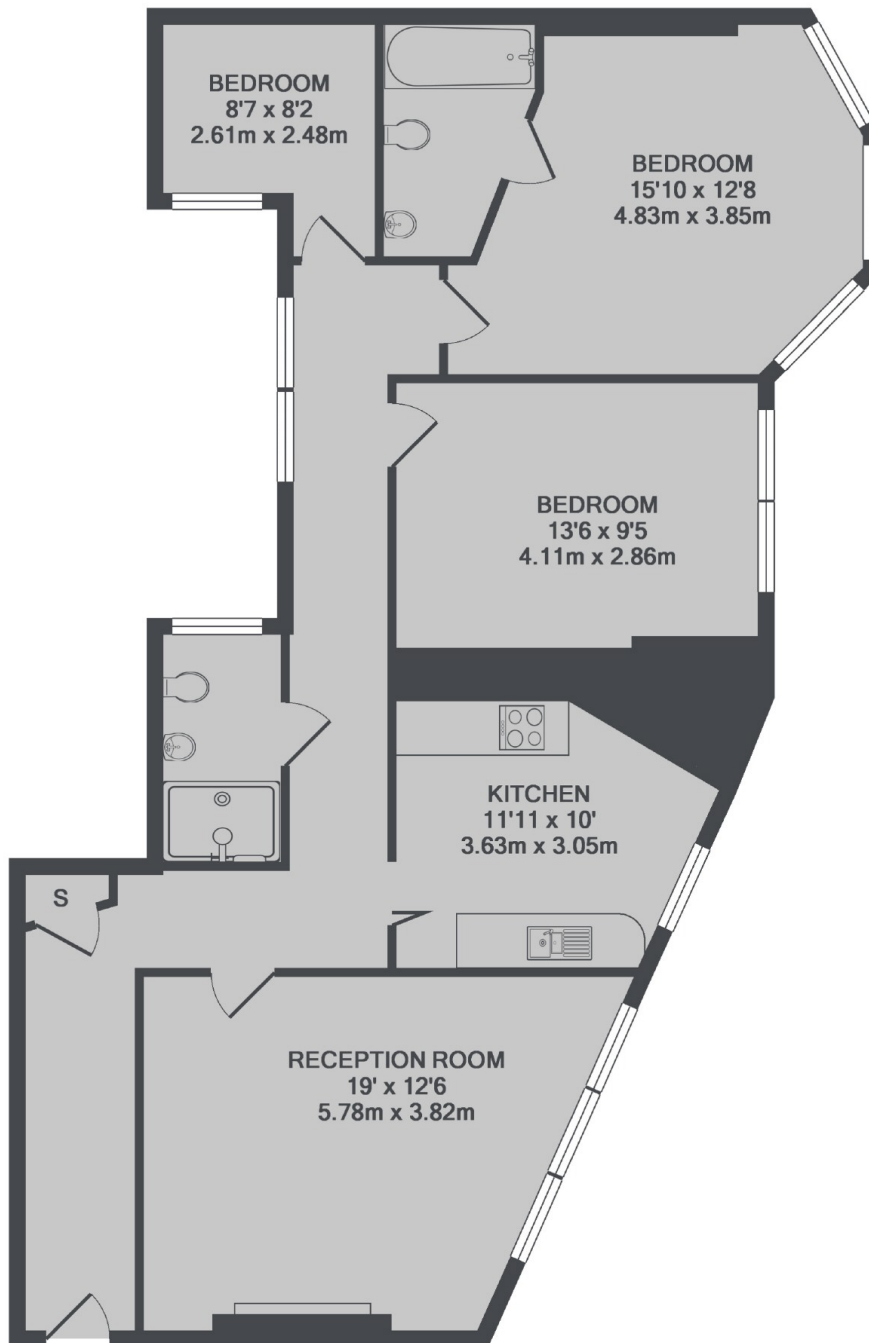
A truly wonderful three double bedroom mansion apartment on the first floor of an elegant Victorian Development. The apartment has great aspects with an abundance of natural light and eat in kitchen.

St Andrews Mansions is located on St Andrews Road. Near to Queens Tennis Club, served well by nearby restaurants and pubs. Barons court and West Kensington stations and the A4 are all within 400 yards

### Features

Three Bedrooms  
Separate Kitchen  
Mansion Block  
Close To Tube  
Upper Floors  
Eat In Kitchen

St. Andrews Road,  
London, W14



TOTAL APPROX. FLOOR AREA 957 SQ.FT. (88.9 SQ.M.)