



Queen's Club Gardens, W14

£650,000

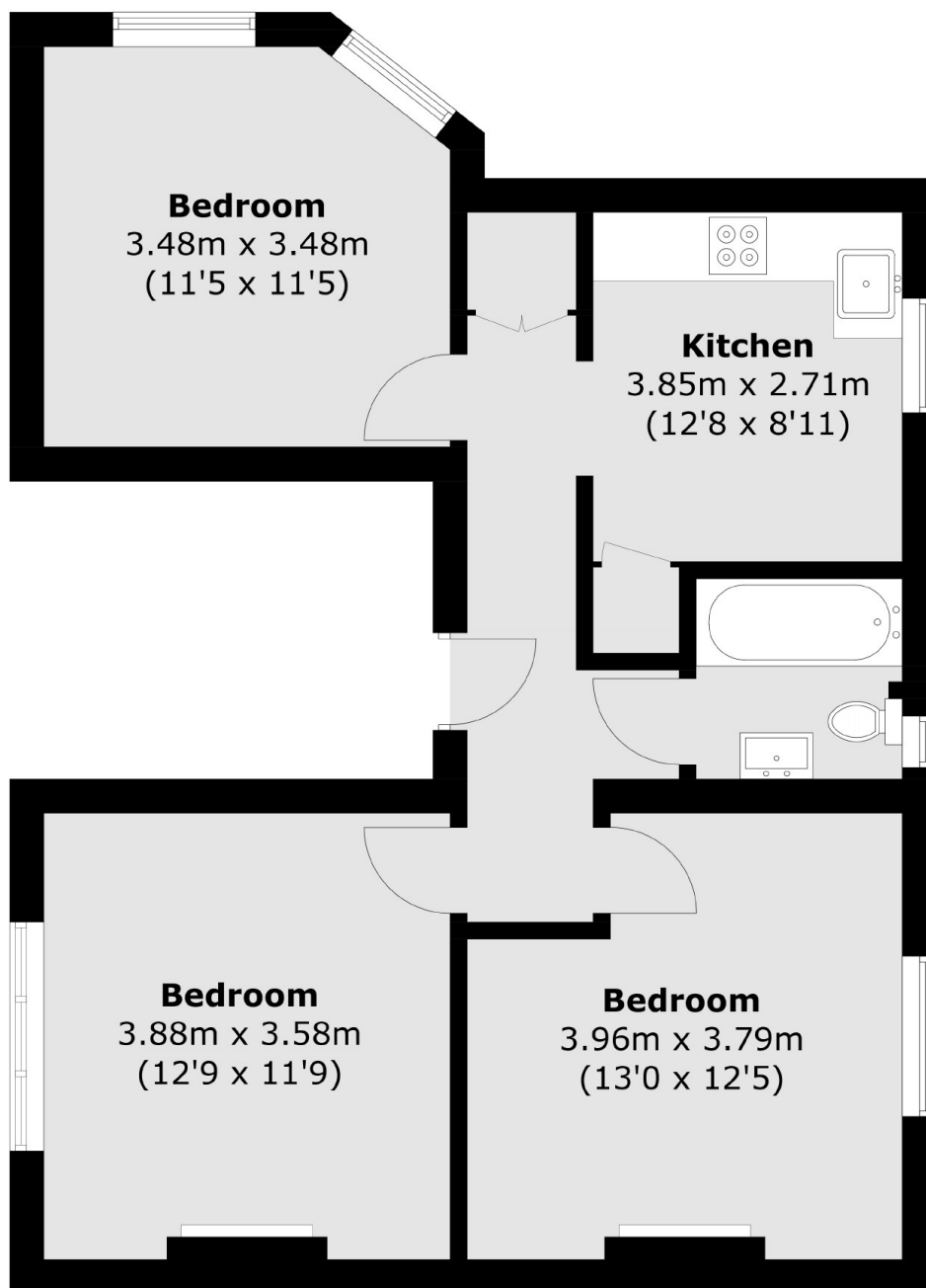
Situated in the ever popular Queens Club Gardens this property offers two great size bedrooms, a spacious kitchen with dining space and a bright living room with views of the communal gardens.

Queens Club Gardens is located just South of the famous Queens Tennis Club and is close to either Barons Court or West Kensington underground stations and within a mile to the facilities in Fulham, Earls Court and Kensington.

Features

- No Chain
- 999 Year Lease
- Two Bedrooms
- Popular Location
- Communal Gardens
- Lovely Condition

Queen's Club Gardens, London, W14



Total area (approx.): 61.5 sq. m (662.0 sq. ft)