



## Gorleston Street, W14

### £5,200 PCM

Very rare four double bedroom family house offering a good size reception great for entertaining, modern eat in kitchen, three bathrooms, utility room, wood floors, high ceilings and a Jacuzzi bath with sliding doors ceiling.

Gorleston Street is close to various underground stations providing the District line, London Overground, Piccadilly line, Circle and Hammersmith and City line.

### Features

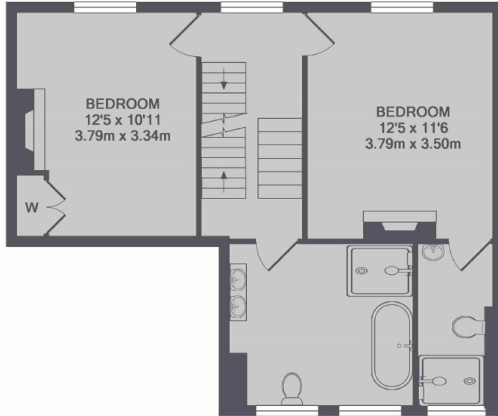
- 206 meter square House
- Wooden Floors
- Three Bathrooms
- Modern
- Utility Room
- Eat In Kitchen



Gorleston Street, W14



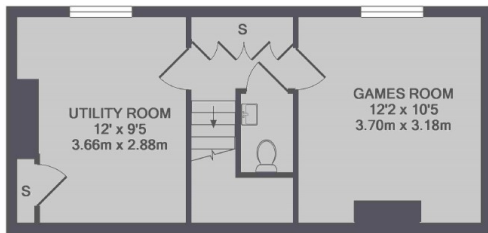
# Gorleston Street, London, W14



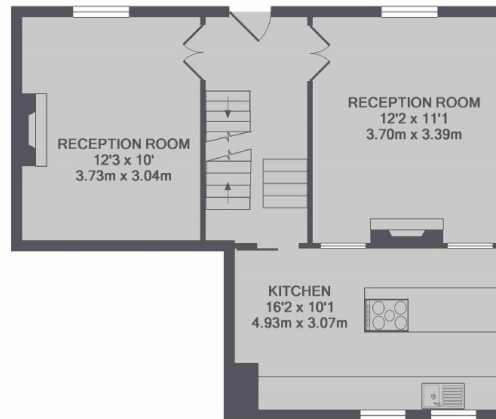
1ST FLOOR



2ND FLOOR



BASEMENT LEVEL



GROUND FLOOR

TOTAL APPROX. FLOOR AREA 2058 SQ.FT. (191.2 SQ.M.)