



## Edith Road, W14

£2,850 Per calendar month

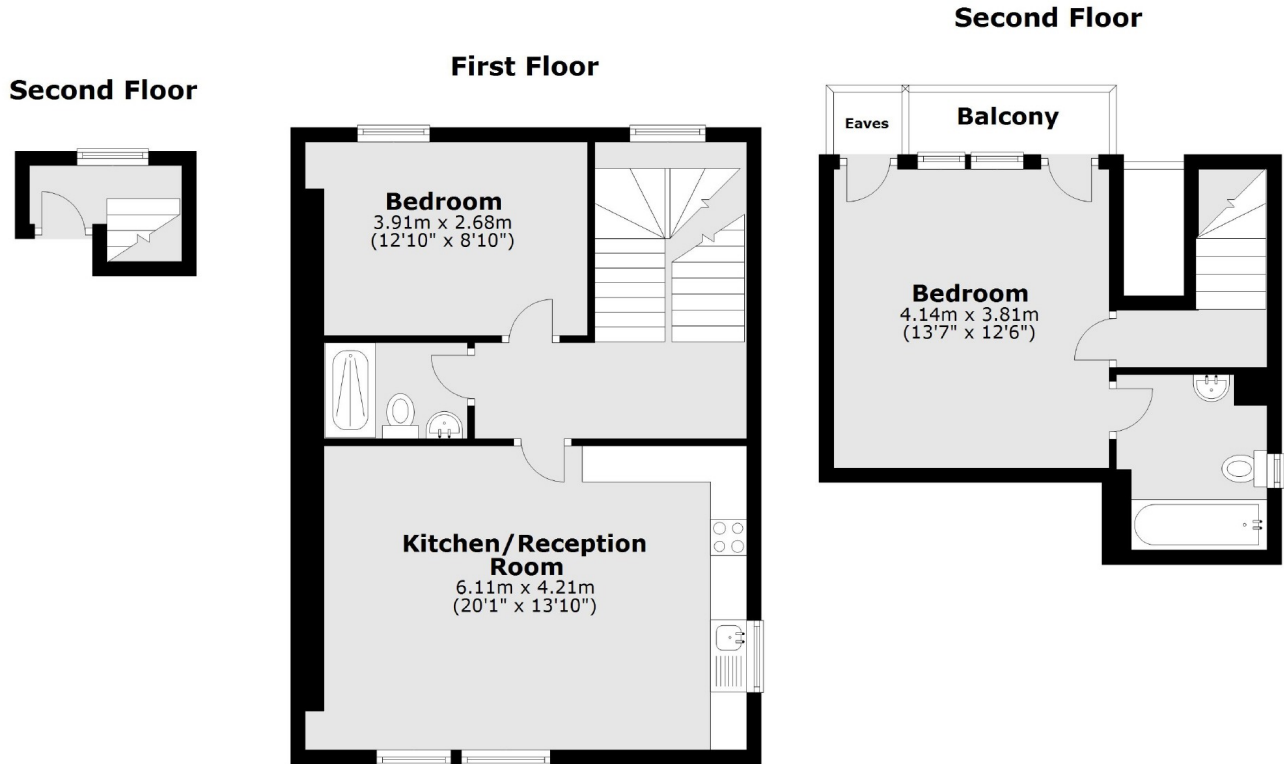
This oversized two bedroom, two bathroom split level top floor flat is based on a quiet tree lined street in West Kensington. The property has a large open plan reception room with modern kitchen and dishwasher.

Edith Road is close to all the local shops, restaurants, cafés and transport links that Kensington Olympia, West Kensington, Barons Court and Hammersmith has to offer.

### Features

- Two Bedrooms
- Two Bathrooms
- Split Level
- Top Floor Flat
- Balcony

Edith Road,  
London, W14



Total area: approx. 78.5 sq. metres (844.8 sq. feet)