



Beaumont Avenue, W14 £285,000

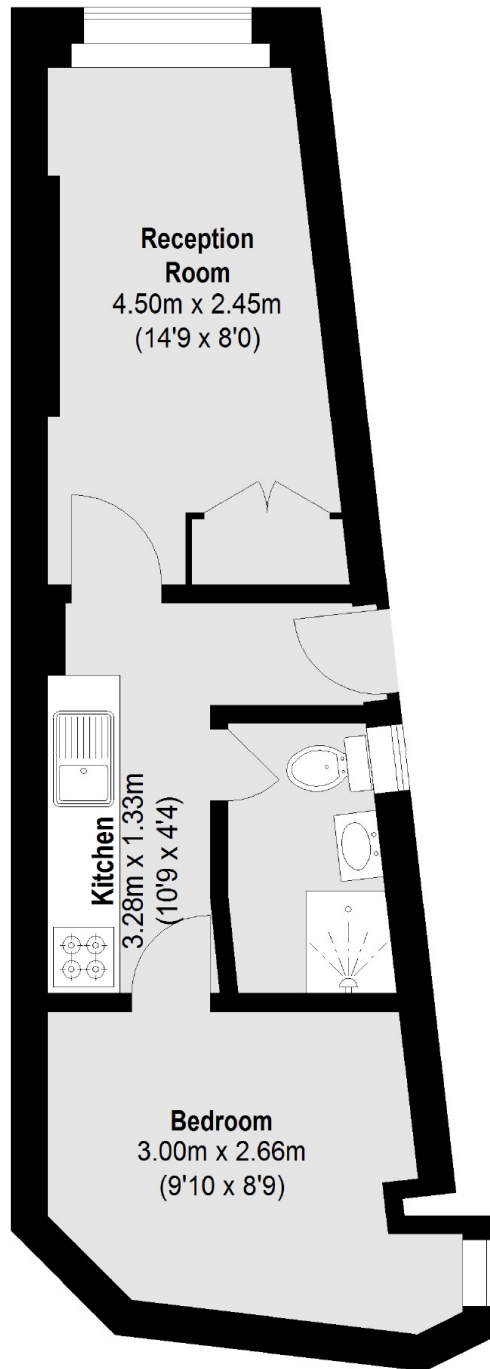
A one bedroom apartment situated in a lovely red brick mansion development. The property has a long leasehold, offered with no onward chain and would make a perfect first home or investment.

Beaumont Avenue has West Kensington station on its doorstep along with all the shops, bars, restaurants and cafés that West Kensington and Barons Court have to offer.

Features

- Long Leasehold
- One Bedroom
- Close To Transport
- Superb Development
- Ground Floor
- Private Entrance

Beaumont Avenue, London, W14



Total area (approx.): 27.51 sq. m (296 Sq. ft)