



Queen's Club Gardens, W14

£675,000

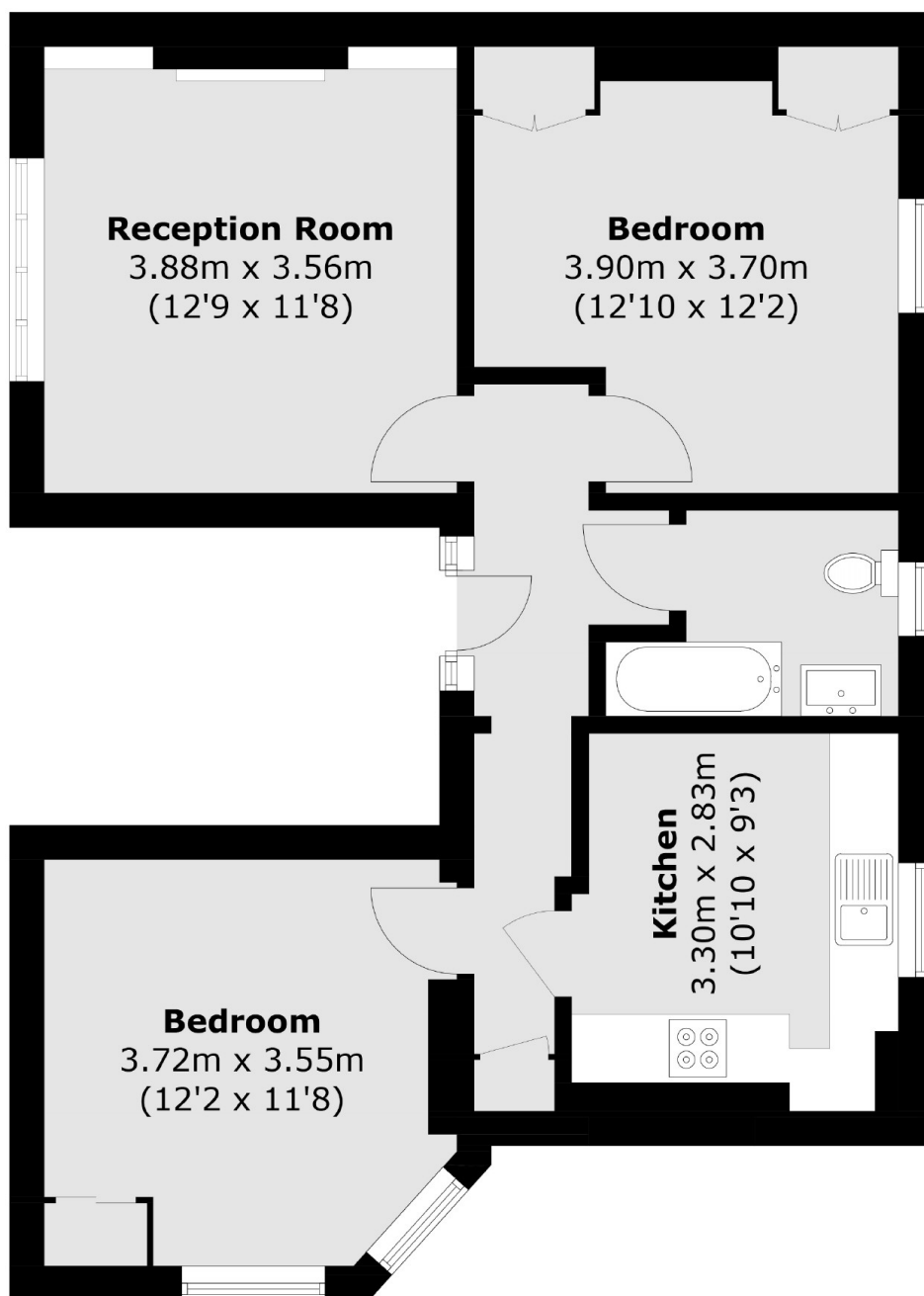
A wonderful two bedroom apartment situated in the popular Queens Club Gardens. The property has fantastic views of the gardens and is situated on the first floor. You have two double bedrooms, a separate kitchen with space for dining and is offered with no onward chain.

Queens Club Gardens is located just South of the famous Queens Tennis Club and is close to either Barons Court or West Kensington underground stations and within a mile to the facilities in Fulham, Earls Court and Kensington.

Features

- Two Bedrooms
- Long Leasehold
- First Floor
- Communal Gardens
- Direct Views Of Gardens
- Close To Tubes

Queen's Club Gardens, London, W14



Total area (approx.): 61.3 sq. m (659.8 sq. ft)