



Fitzjames Avenue, W14

£950,000

A three bedroom apartment located in the popular North End House, one of the best developments on this street and within walking distance to Kensington & Olympia, Barons court and West Kensington stations.

North End House, located on Fitzjames Avenue, is a popular tree lined road on the edge of Kensington High Street.

Features

- Long Lease
- Porter
- Communal Garden
- Two Bathrooms
- Lift Service
- Popular Development



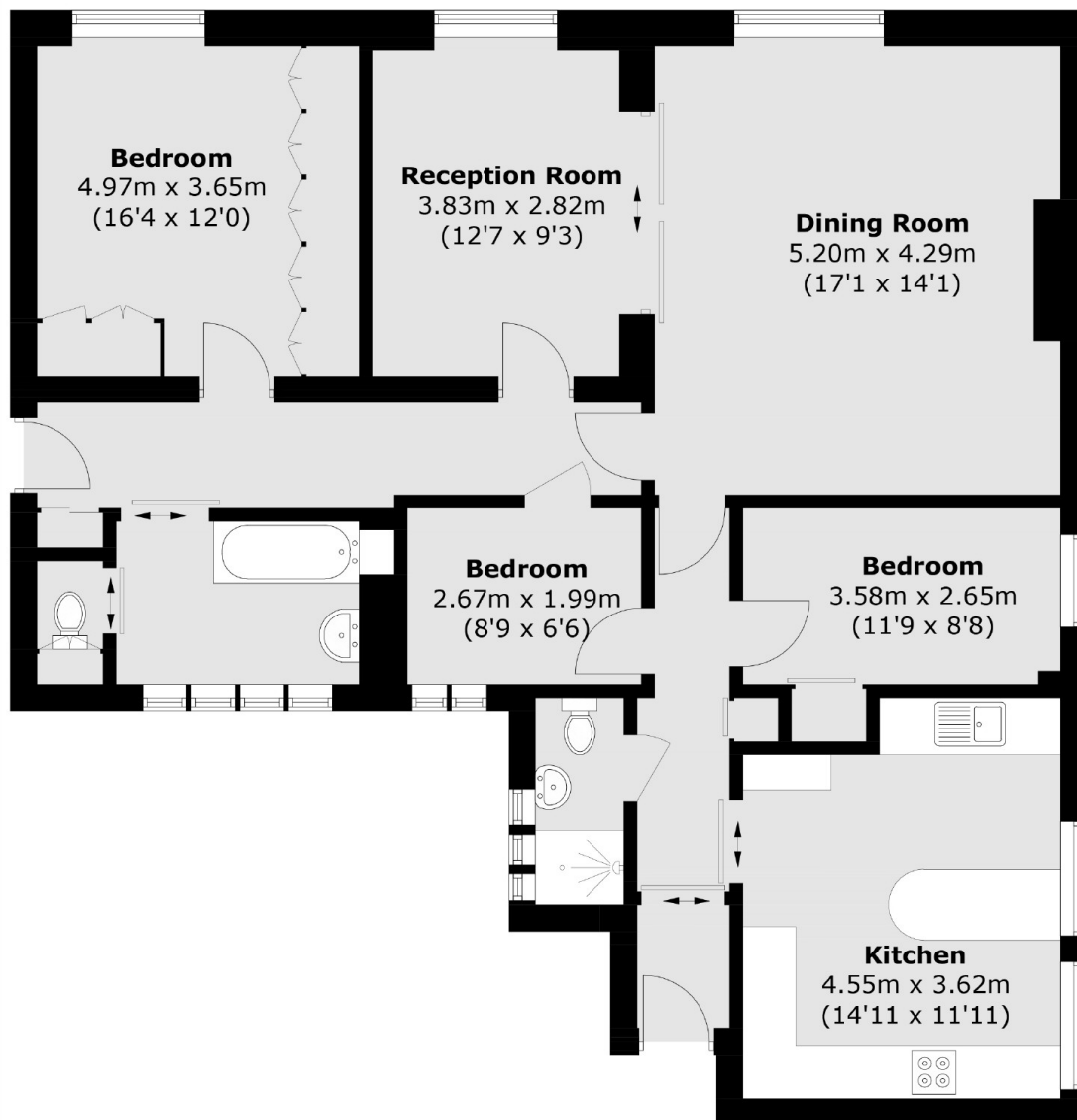
Fitzjames Avenue, W14

This property makes an ideal family home with over 1170sq/ft of space and flooding natural light throughout.

This highly desirable apartment also has access to a well-presented communal garden, an opportunity for private parking and a porter on site. The property is in lovely condition through-out with a double reception, ideal for entertaining friends and family.



Fitzjames Avenue, London, W14



Total area (approx.): 109.2 sq. m (1,175.4 sq. ft)