



## Harfield Road, TW16

£1,200,000

A four bedroom detached house with off-street parking, a garage and a large mature west facing garden. This spacious family home is filled with charm and potential and is being sold with the added benefit of no forward chain.

Harfield Road is a wonderful location on the borders of Sunbury and Hampton with the River Thames just at the end of the road. Hampton Station is approximately 1 mile away and provides a direct service into London Waterloo.

### Features

- Detached
- Four Bedrooms
- Two Reception Rooms
- Downstairs W.C.
- Amazing Rear Garden
- No Forward Chain





## Harfield Road, TW16

On the ground floor there is a welcoming entrance hallway, a spacious dual aspect reception room, a second reception room, a kitchen breakfast room and a W.C.

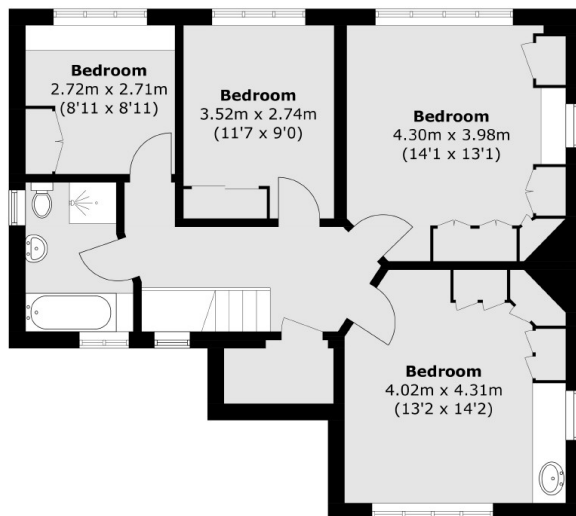
On the first floor there are four bedrooms, all with built in storage and a family bathroom with a bath and separate walk in shower.

To the rear of the house is an incredible mature garden with a large patio area, lawn and mature plants and borders.

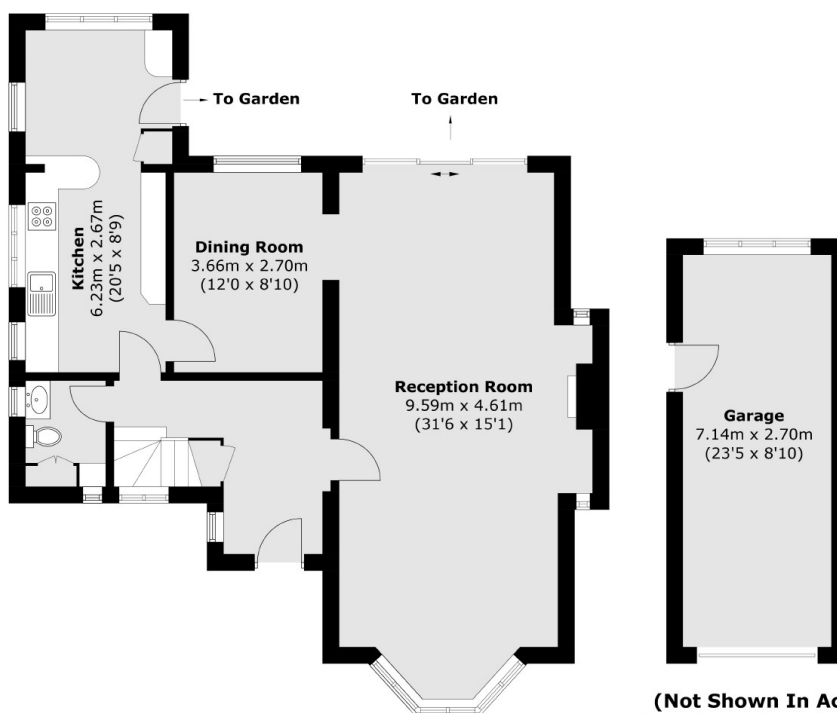




# Harfield Road, Sunbury-On-Thames, TW16



**First Floor**



**Ground Floor**

Total area (approx.): 150.8 sq. m (1,623.2 sq. ft)  
Garage: 19.4 sq. m (208.8 sq. ft)

## Dexters

Sunbury  
22 Thames Street  
Sunbury-On-Thames  
TW16 6AF  
Sales  
01932 781100

Energy Rating: . We aim to make our particulars both accurate and reliable. However they are not guaranteed; nor do they form part of an offer or contract. If you require clarification on any points then please contact us, especially if you're traveling some distance to view. Please note that appliances and heating systems have not been tested and therefore no warranties can be given as to their good working order.

 **RICS** | Regulated  
Estate Agent  
and Letting Agent

dexters.co.uk