



Vereker Drive, TW16

£1,150,000

Dexters



Vereker Drive, TW16

An extended and modernised four bedroom detached house with off street parking for four cars. This amazing property is smartly presented throughout. This is a perfect home for a family looking to upsize to a new home that they can move straight into.

On the ground floor there is a welcoming entrance hallway with a cloakroom, a generous front reception room, a utility room, an additional reception which is currently used as a playroom, a study and a kitchen, dining and family room room with bi-folding doors opening out on to the garden making this an ideal space for entertaining friends and family.

On the first floor there is a spacious master bedroom with an en suite bathroom and walk in wardrobe. There are three additional bedrooms and a family bathroom.

At the front of the property is ample off street parking for four to five cars and access to the garage. To the rear is a charming garden with a patio area, lawn and flower borders.

Vereker Drive is a highly sought road within the popular Berg development. Sunbury Park, the local Village shops, Sunbury Station, the River Thames and the riverside pubs are all close by.

Features

Detached

Four Bedrooms

Two Bathrooms

Utility Room

Open Plan Kitchen

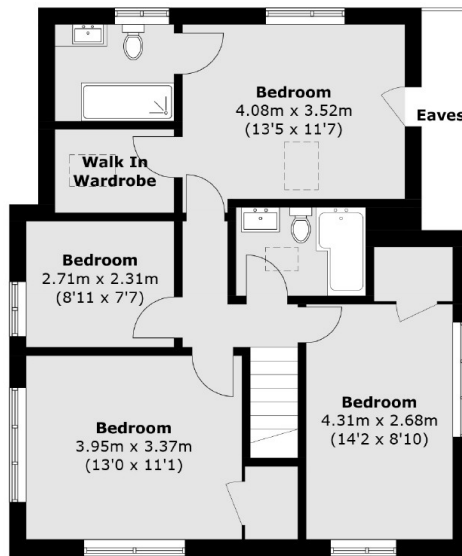
Off Street Parking



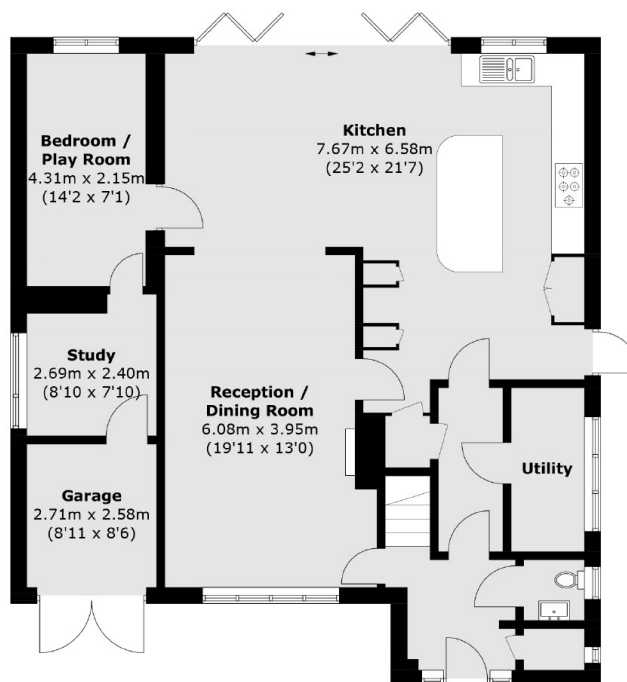




Vereker Drive, Sunbury-On-Thames, TW16



First Floor



Ground Floor

Total area (approx.): 173.8 sq. m (1,870.7 sq. ft)
(Including Garage / Excluding Eaves)