



Batavia Road, TW16

£265,000

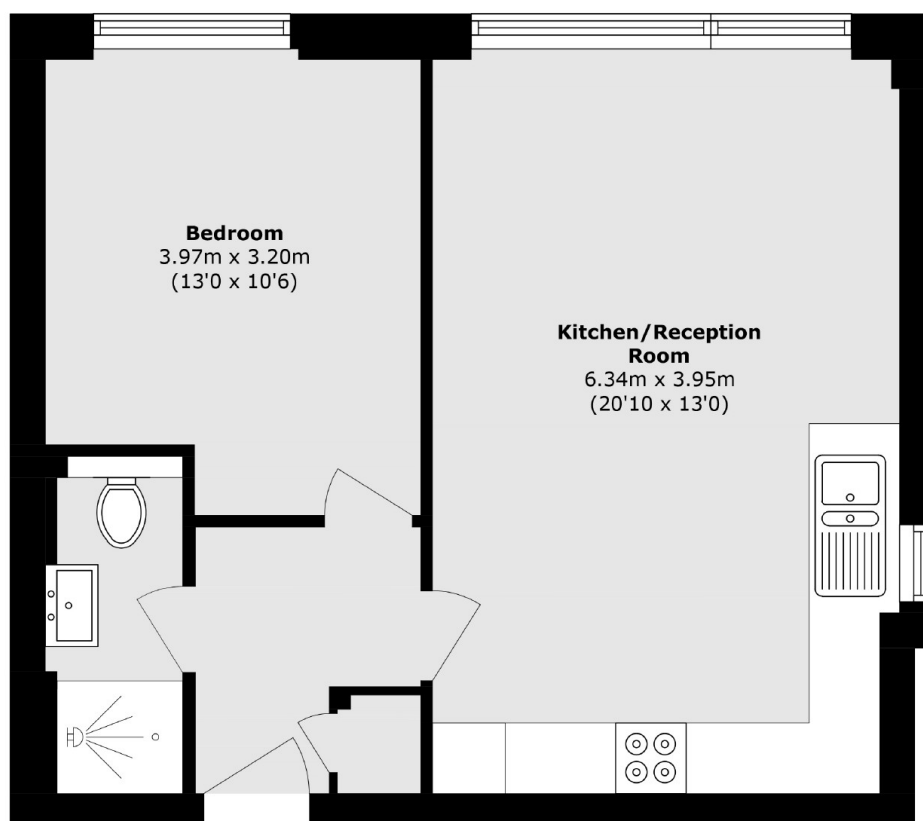
A beautifully presented, modern, first floor apartment that offers open plan living. Combining both a reception area and fully fitted kitchen with integrated appliances. This development was a new build 5 years ago and being sold with the bonus of an allocated parking space.

Strata House is located close to the A308 and A316 for direct access into the Richmond Borough and London and close to the M3. You are also in walking distance to Kempton Station for a direct train into Waterloo and close to local shops and services.

Features

- Allocated Parking
- One Bedroom
- First Floor
- Modern
- Integrated appliances
- New build

Batavia Road, Sunbury-On-Thames, TW16



Total area (approx.): 45.8 sq. m (492.9 sq. ft)