

## Lime Crescent, TW16

### £335,000

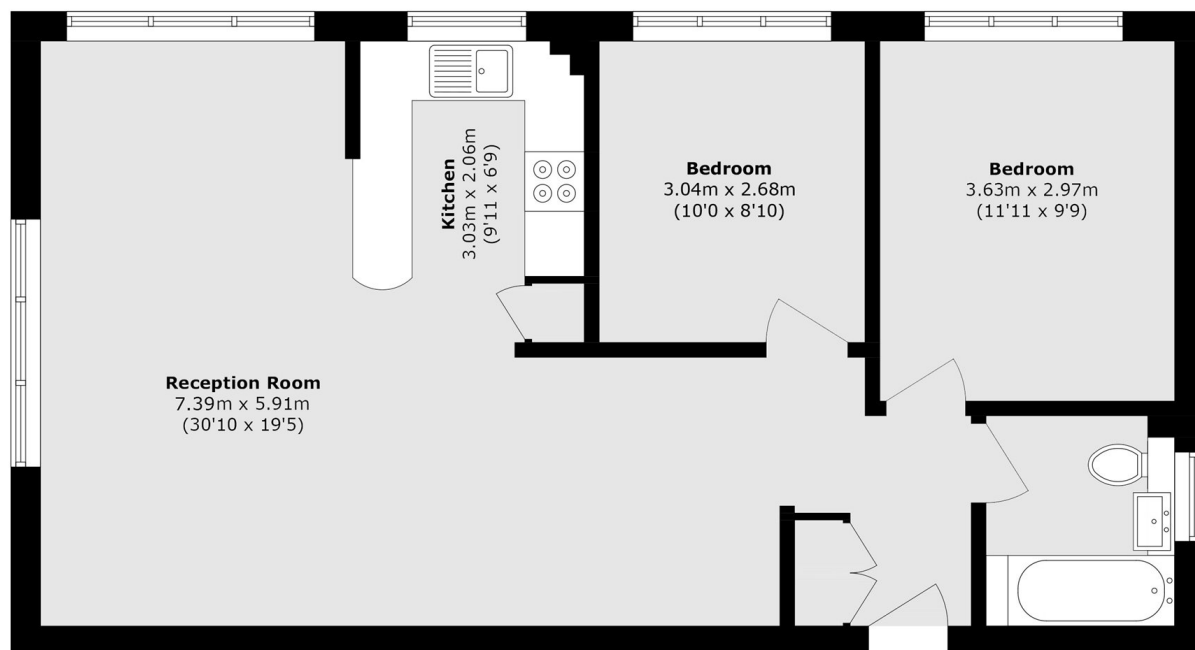
A spacious two bedroom first floor apartment with allocated parking and communal gardens. The property is smartly presented throughout and would make a perfect first home.

Lime Crescent is a quiet residential cul-de-sac in Lower Sunbury. The River Thames, riverside pubs, local village shops and Sunbury Park are all close by.

### Features

- First Floor
- Open Plan Reception
- Two Bedrooms
- No Forward Chain
- Allocated Parking
- Communal Gardens

# Lime Crescent, Sunbury-On-Thames, TW16



Total area (approx.): 67.4 sq. m (725.4 sq. ft)