



Thames Street, TW16

£550,000

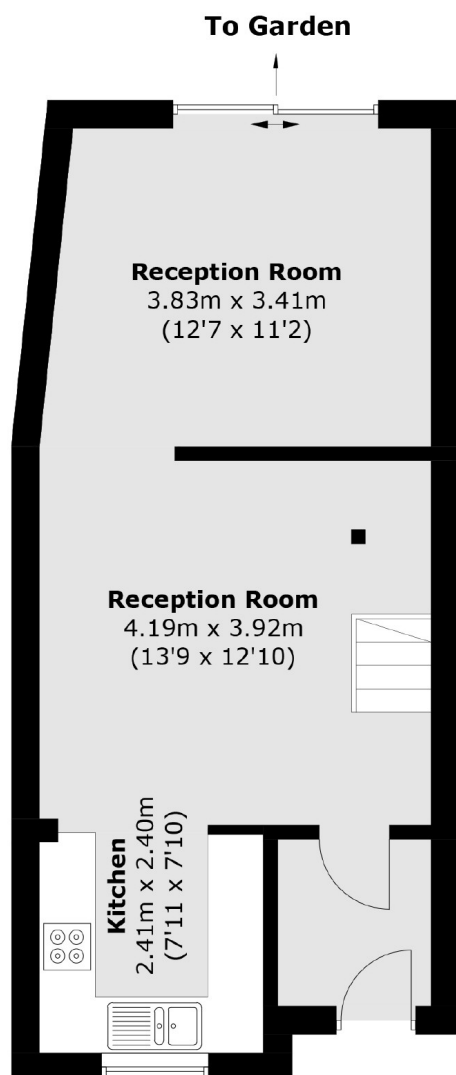
A smartly presented two bedroom house with the bonus of a private garden and an outbuilding which could be turned into a home office. The property offers an open plan living and would be perfect as a first family home or for someone looking to downsize.

Located on Thames Street in the heart of Lower Sunbury conversation area, the location is unbeatable. Everything the village has to offer is close by including the River Thames, riverside pubs, Rivermead Island and Sunbury Park.

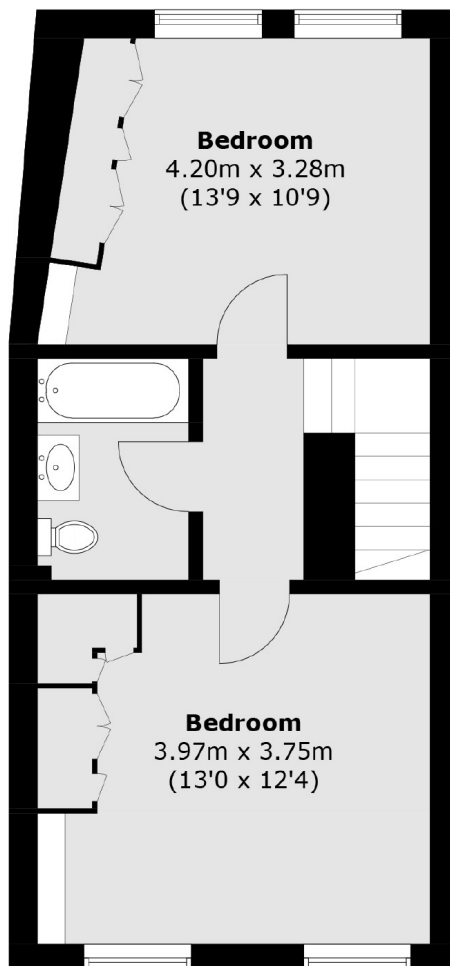
Features

- Freehold
- Two Bedrooms
- Open Plan
- Private Garden
- Outbuilding Building/Office
- Central Village Location

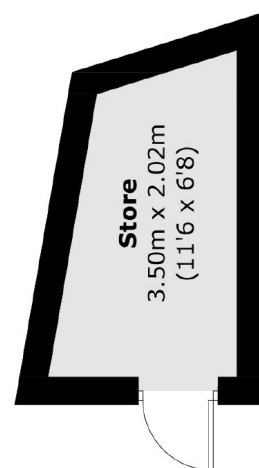
Thames Street, Sunbury-On-Thames, TW16



Ground Floor



First Floor



**(Not Shown In Actual
Location / Orientation)**

Total area (approx.): 80.3 sq. m (864.4 sq. ft)
Outbuilding: 5.8 sq. m (62.4 sq. ft)