



## Kingsmead Avenue, TW16

### £875,000

A stylishly presented five bedroom detached house with off-street parking, a garage and a south facing rear garden. This lovely property has been substantially extended and updated by the current owners to create a beautiful family home.

Kingsmead Avenue is a highly sought after location, everything Sunbury Village has to offer is just around the corner including the local shops, Sunbury Park, the River Thames and riverside pubs.

### Features

- Prime Location
- Five Bedrooms
- Two Reception Rooms
- South Facing Garden
- Off-Street Parking
- Garage





## Kingsmead Avenue, TW16

On the ground floor there is welcoming entrance hallway, a front reception room which is currently set up as a dining room, a modern kitchen with integrated appliances and a spacious double reception room with patio doors opening out on to the garden. There are also the added bonuses of a W.C, a porch and access to the garage.

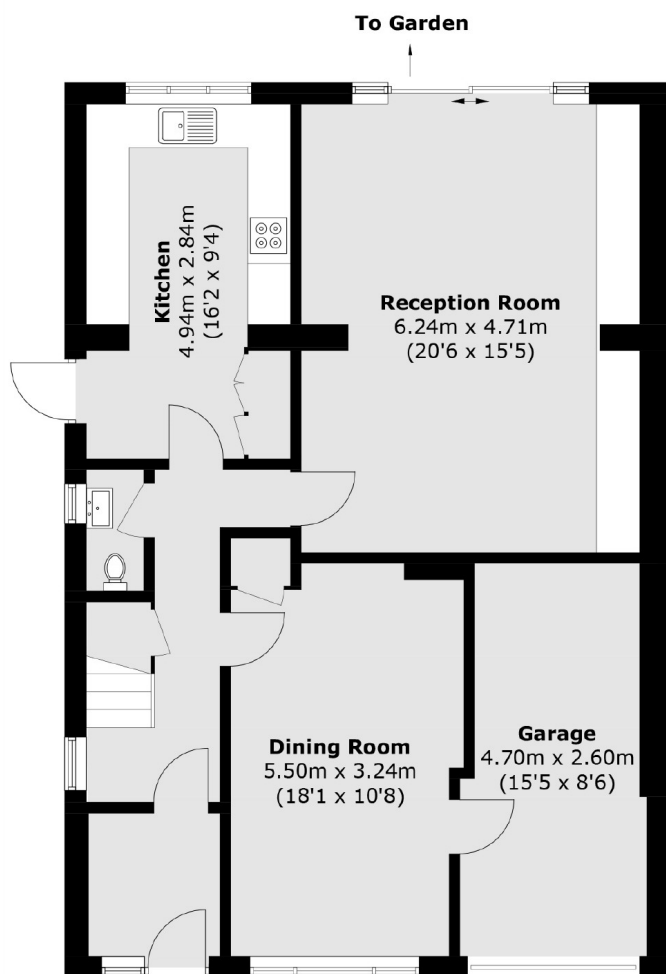
On the first floor there are five bedrooms, one of which is currently being used as a home office and a family bathroom. To the front of the property there is off-street parking and access to the garage. To the rear is a charming landscaped garden with a patio area that is perfect for entertaining friends and family, an expansive lawn and a water feature with pond.

Wonderful houses like this do not come on to the market often. This property is ideal for upsizing families; the amazing location and the flexible space makes this a home that you must see!

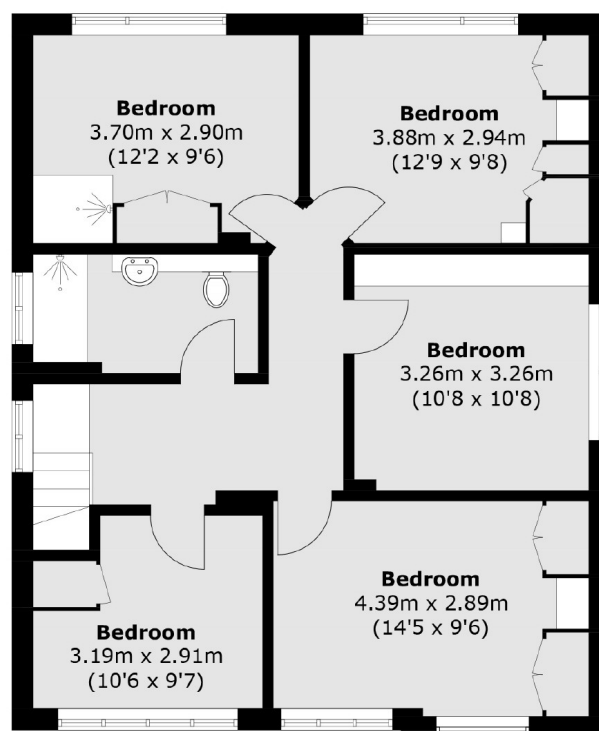




# Kingsmead Avenue, Sunbury-On-Thames, TW16



**Ground Floor**



**First Floor**

Total area (approx.): 164.9 sq. m (1,775.0 sq. ft)