



Harfield Road, TW16

£1,150,000

A six bedroom detached house with off-street parking, a double length garage and a wonderful westerly facing rear garden. This spacious property is full of potential and scope to extend further (STPP) and is ideal for a family looking for their forever home.

Harfield Road is an amazing location on the borders of Sunbury-on-Thames and Hampton with the River Thames just at the end of the road. Hampton Station is approximately 1 mile away and provides a direct service into London Waterloo.

Features

- Detached
- Six Bedrooms
- Two Bathrooms
- Large Rear Garden
- Double Length Garage
- No Forward Chain



Harfield Road, TW16

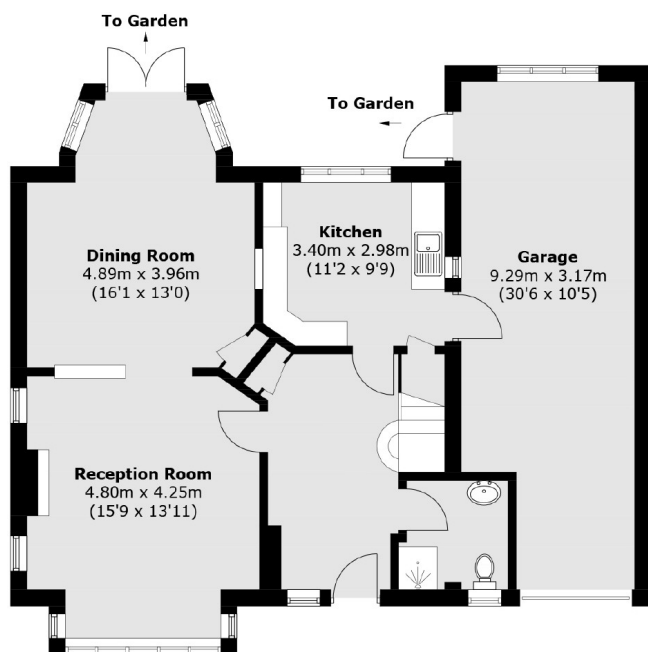
On the ground floor there is a welcoming entrance hallway, a bay front reception room with a feature fireplace, a dining room with doors leading out on to the garden, a kitchen and a shower room with W.C.

On the first floor there are six bedrooms and a family bathroom with a separate W.C to the front of the property there is a front garden, off-street parking for approximately three cars and access to the double length garage. To the rear is a lovely mature garden with patio area, expansive lawn and mature trees and bushes.

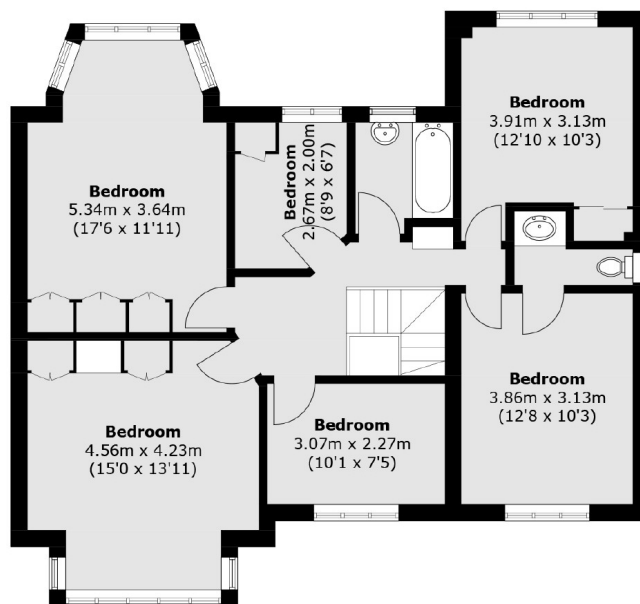
This great family home is coming to the market for the first time in over 50 years, early viewings are highly recommended.



Harfield Road, Sunbury-On-Thames, TW16



Ground Floor



First Floor

Total area (approx.): 186.3 sq. m (2,005.3 sq. ft)
(Including Garage)